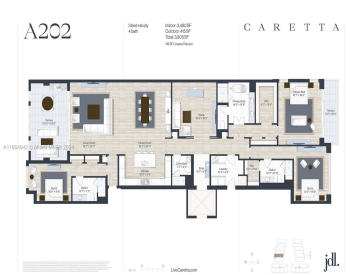


1011 US HIGHWAY ONE, JUNO BEACH, FL, 33408

https://igorpresman.com

1011 US Highway One, Juno Beach, FL, 33408



Pre-Season Special! Showroom Now Open! New construction just 400 yards to the beach. Juno Beach’s newest seaside urban community, Caretta! Simplify your life with all the modern luxuries including a chef’s kitchen with natural gas featuring wolf stove, sub-zero refrigeration, spacious island with waterfall countertops, wine storage, elegant features & 10’ ceilings. Enjoy Florida living [...]

- 3 beds
- 4 baths
- Residential
- Condominium
- Active
- 3490 sq ft



Rooms



Room type	Dimensions	Area	Length	Width
ThirdBedroom	16 x 11.6	185.6	16	11.6
Kitchen	19.8 x 9.9	196.02	19.8	9.9
SecondBedroom	12.5 x 16.9	211.249999	12.5	16.9
PrimaryBedroom	16.7 x 19	317.3	16.7	19
Den	16.9 x 16.5	278.849999	16.9	16.5
DiningRoom	19.2 x 22	422.4	19.2	22
LivingRoom	19.42 x 22	427.24	19.42	22
PatioBalcony	13.1 x 23.6	309.16	13.1	23.6

Building Details

Cooling features: Central Air, Electric, Zoned

Building Name: Caretta

Parking: 2 Or More Spaces, Assigned, Covered, Guest, On-street, Parking-Under Building

NewConstructionYN: No

Heating: Heat Pump/Reverse Cycle

Amenities & Features



Features: Den/Library/Office, Elevator, Entrance Foyer, Family Room, Great Room, Roman Tub, Split Bedroom, Utility Room/Laundry, Volume Ceilings, Walk-In Closet(s), Wet Bar

Amenities: Dishwasher, Disposal, Dryer, Gas Range, Gas Water Heater, Ice Maker, Microwave, Refrigerator, Wall Oven, Washer

ExteriorFeatures: West Of Us1, Barbeque

GarageYN: Yes

CoolingYN: Yes

FireplaceYN: No

Security Features: Fire Alarm, Smoke Detector, Card Entry, Security Patrol

WindowFeatures: Complete Impact Glass, Impact Glass, Sliding

Waterfront available: No

AttachedGarageYN: Yes

PoolPrivateYN: No

