

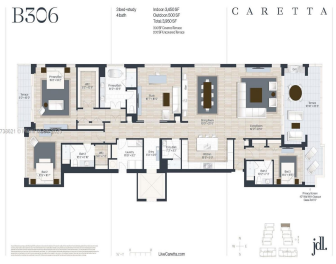
1011 US HIGHWAY ONE, JUNO BEACH, FL, 33408

<https://igorpresman.com>

1011 Us Highway One, Juno Beach, FL, 33408



\$4,095,000



Showroom Now Open! New construction just 400 yards to the beach. Juno Beach's newest seaside urban community, Caretta! Simplify your life with all the modern luxuries including a chef's kitchen with natural gas featuring wolf stove, sub-zero refrigeration, spacious island with waterfall countertops, wine storage, elegant features & 10' ceilings. Enjoy Florida living with an [...]

- 3 beds
- 4 baths
- Residential
- Condominium
- Active
- 3450 sq ft



Rooms



Room type	Dimensions	Area	Length	Width
UtilityRoom	11.10x9.2	102.119999	11.1	9.2
Grt Rm	19x22	418	19	22
Kitchen	19.8x9.9	196.02	19.8	9.9
Den	16.7x16.5	275.55	16.7	16.5
PrimaryBedroom	15.8x19.2	303.36	15.8	19.2
ThirdBedroom	11x11.6	127.6	11	11.6
SecondBedroom	12.5x16.7	208.75	12.5	16.7
PatioBalcony	13.1x36.8	482.079999	13.1	36.8
PatioBalcony	5x19	95	5	19

Building Details

Cooling features: Central Air, Zoned **ArchitecturalStyle:** Corner Unit

NewConstructionYN: Yes **Building Name:** Caretta

Heating: Heat Pump/Reverse Cycle **Parking:** 2 Or More Spaces, Assigned, Covered, Guest, Parking-Under Building

Amenities & Features



Features: Bar, Den/Library/Office, Elevator, Family Room, Fire Sprinklers, Great Room, Storage, Utility Room/Laundry, Walk-In Closet(s), Wet Bar

Amenities: Dishwasher, Disposal, Dryer, Gas Range, Microwave, Refrigerator, Wall Oven, Washer

ExteriorFeatures: West Of Us1

GarageYN: Yes

CoolingYN: Yes

FireplaceYN: No

Security Features: Fire Sprinklers, Fire Alarm, Smoke Detector, Card Entry, Security Patrol

WindowFeatures: Complete Impact Glass, High Impact Windows, Impact Glass

Waterfront available: No

AttachedGarageYN: Yes

PoolPrivateYN: No

