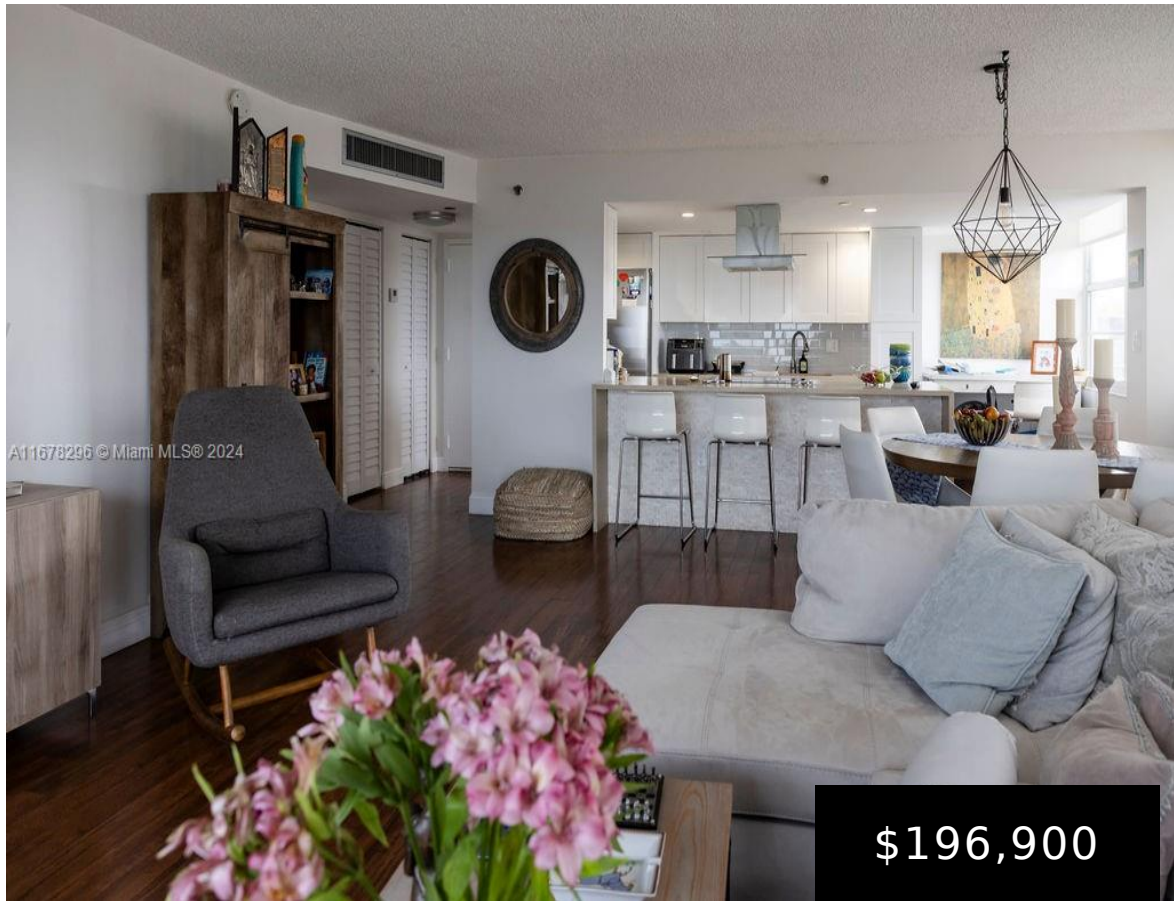


1300 SAINT CHARLES PL, PEMBROKE PINES, FL, 33026

https://igorpresman.com

1300 Saint Charles
Pl, Pembroke Pines,
FL, 33026



Pembroke Pines Luxury PH in active adult 55+ community. 2/2 with many upgrades, new baths, one of them completely handicapped, upgraded open concept kitchen, laminated wood floors throughout. Beautiful terrace with rustic marble floors and 180 degrees view over golf course and everglades. Less than 6 years a/c unit. Smart water heater. Walking closet in [...]

- 2 beds
- 2 baths
- Residential
- Condominium
- Active
- 1120 sq ft



Building Details

Cooling features: Central Air

NewConstructionYN: No

Exterior material: CBS Construction

Parking: 1 Space, Assigned

ArchitecturalStyle: Penthouse

Building Name: Park Place Condo

Heating: Central





Amenities & Features

Features: Walk-In Closet(s)

Amenities: Dishwasher, Dryer, Electric Range, Microwave, Refrigerator, Washer

ExteriorFeatures: Open Balcony

GarageYN: No

CoolingYN: Yes

FireplaceYN: No

Security Features: Guard At Site, Intercom In Lobby, Lobby Secured, Security Patrol

WindowFeatures: High Impact Windows, Impact Glass

Waterfront available: No

AttachedGarageYN: No

PoolPrivateYN: No

