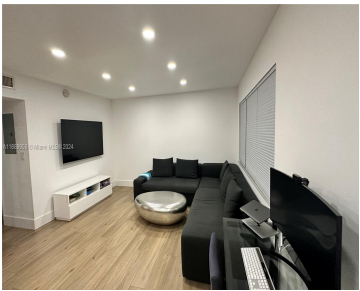


1451 12TH CT, HOLLYWOOD, FL, 33019

<https://igorpresman.com>

1451 12th Ct,
Hollywood, FL,
33019



East of US1, walking distance to Hollywood Boardwalk and two golf courses. 2 beds, 2 bath units on the 2nd floor. Wide plank white oak engineered hardwood throughout. Kitchen adorned with black onyx matte tiles. Modern baths. Nest Smart Thermostat and August Lock. Unique bar/coffee bar area. Central A/C from 2020. Tankless water heater from [...]

- 2 beds
- 1 bath
- Residential Lease
- Condominium
- Active
- 870 sq ft



Building Details

Cooling features: Ceiling Fan(s), Central Air	ArchitecturalStyle: Second Floor Entry
NewConstructionYN: No	Building Name: CRYSTAL COURT MANOR NO 11
Exterior material: Stucco	Roof: Flat Roof With Facade Front
Heating: Central	Parking: 1 Space





Amenities & Features

Features: Built-in Features, Closet Cabinetry, Cooking Island, Exclusions, Fire Sprinklers, Recreation Room, Second Floor Entry, Storage

Amenities: Dishwasher, Disposal, Dryer, Electric Range, Electric Water Heater, Microwave, Refrigerator

WindowFeatures: Blinds, Impact Glass

PoolFeatures: In Ground, Community, Heated

GarageYN: Yes

CoolingYN: Yes

FireplaceYN: No

Security Features: Fire Sprinklers, Fire Alarm, Smoke Detector

CommunityFeatures: Lawn/Pool Maintenance, Recreation Facilities, Clubhouse, Pool, Exercise Room, Game Room, Laundry Facilities, Maintained Community, Picnic Area, Public Road, Street Lights

ExteriorFeatures: Barbeque, Lighting

Waterfront available: No

AttachedGarageYN: No

PoolPrivateYN: No

