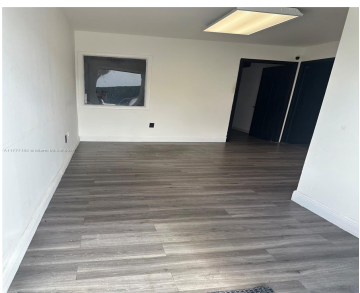


1565 88TH AVE, DORAL, FL, 33172

<https://igorpresman.com>

1565 88th Ave,
Doral, FL, 33172



Space Available for immediate occupancy. Lake views Warehouse /office in an Excellent Location for Lease. 1,570 square feet total, 400 square feet of office, 1,070 square feet of warehouse. Could be a private office and showroom, one bathroom, 18-20 clear ceilings, twin-t concrete roof, built in 1980. AC in the office area. 5 assigned parking [...]

- Commercial Sale
- Industrial
- Active



Building Details

Cooling features: Central Building A/C	ParkingTotal: 5
NewConstructionYN: No	Exterior material: Concrete Block Construction
Roof: Concrete	Heating: Central Electric
Parking: Assigned, Common, Guest	





Amenities & Features

Security Features: Smoke Alarm, Security System

Waterfront available: Yes

AttachedGarageYN: No

PoolPrivateYN: No

WindowFeatures: Clear Impact Glass

GarageYN: No

CoolingYN: Yes

FireplaceYN: No

