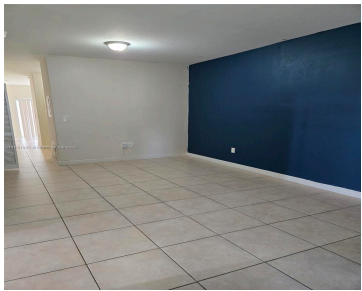


1568 26TH ST, HOMESTEAD, FL, 33035

<https://igorpresman.com>

1568 26th St,
Homestead, FL,
33035



Gated community with 24 hours security, 2 resort style pools, bbq area, kid zone. 1st floor corner apartment, tile floors throughout. Side by side refrigerator, washer and dryer. 2 assigned parking spaces. Main bedroom has a walking closet.

- 3 beds
- 2 baths
- Residential Lease
- Condominium
- Active
- 1060 sq ft



Building Details

Cooling features: Central Air, Electric
Building Name: SHOMA CONDO AT KEYS COVE
Parking: 2 Spaces, Limited # Of Vehicle, No Trucks/Trailers

NewConstructionYN: No
Heating: Central, Electric





Amenities & Features

- Features:** First Floor Entry

Amenities: Dishwasher, Dryer, Electric Range, Microwave, Refrigerator, Washer

GarageYN: No

CoolingYN: Yes

FireplaceYN: No
- Security Features:** Building Security, Complex Fenced, Gated with Guard, Security Patrol

Waterfront available: No

AttachedGarageYN: No

PoolPrivateYN: No

