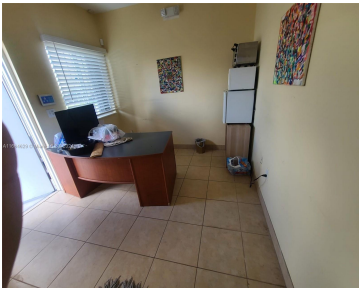
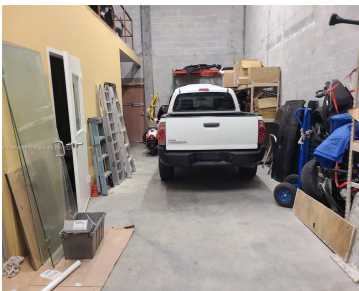




\$384,900



Great opportunity warehouse with secure gate. Two offices and additional space upstairs. Non-automotive uses will be allowed by association. Gate opens and closes automatically from 7am to 7 pm. Minutes from the turnpike and centrally located. Landscape, maintenance, water, garbage.

- Commercial Sale
- Industrial
- Active



Building Details

Cooling features: Central Individual A/C	ParkingTotal: 2
NewConstructionYN: No	Building Name: 16235
Exterior material: CBS Construction	Heating: Central Electric, Central Individual A/C
Parking: Assigned	





Amenities & Features

Security Features: Security Gate

GarageYN: No

CoolingYN: Yes

FireplaceYN: No

Waterfront available: No

AttachedGarageYN: No

PoolPrivateYN: No

