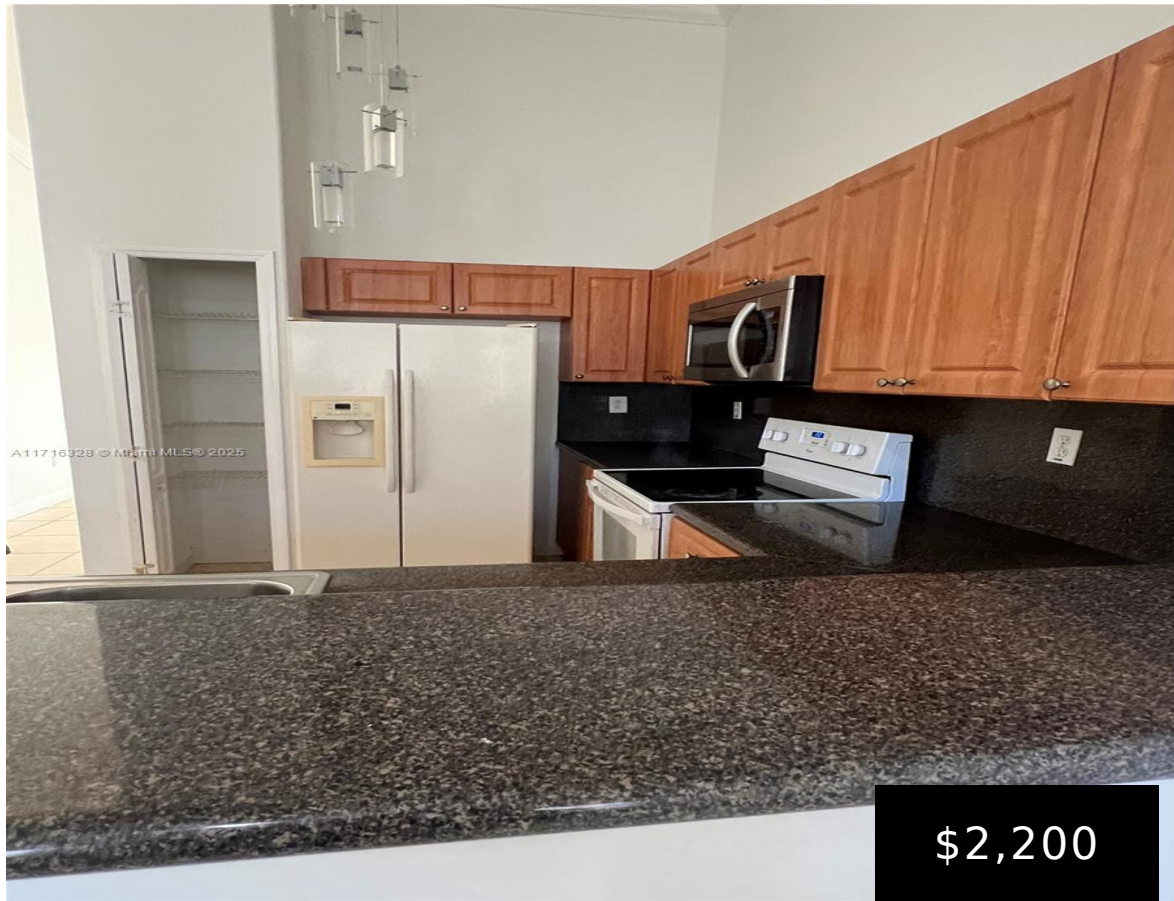


1651 28TH CT, HOMESTEAD, FL, 33035

<https://igorpresman.com>

1651 28th Ct,  
Homestead, FL,  
33035



\$2,200

Beautiful bright and spacious 3/2 condo unit w/ 1,076 Sq. Ft. of living space in the gated community of Shoma Keys Cove Condominium. It has the perfect floor plan. The unit features ceramic tile in the common areas and laminated floor in the bedrooms. Dryer & washer inside the unit, two assigned parking spaces. Secure [...]

- 3 beds
- 2 baths
- Residential Lease
- Condominium
- Active
- 1076 sq ft



## Building Details

**Cooling features:** Central Air

**Building Name:** SHOMA CONDO AT KEYSCOVE C

**Heating:** Central

**NewConstructionYN:** No

**Exterior material:** CBS Construction

**Parking:** 2 Spaces, No Rv/Boats, No Trucks/Trailers





# Amenities & Features

- Features:** Second Floor Entry
- Amenities:** Dishwasher, Dryer, Electric Range, Gas Range, Microwave, Refrigerator, Trash compactor, Washer
- WindowFeatures:** Blinds
- GarageYN:** Yes
- CoolingYN:** Yes
- FireplaceYN:** No
- Security Features:** Complex Fenced, Gated with Guard, Security Patrol
- CommunityFeatures:** Clubhouse, Pool, Gated Community, Maintained Community, Security Patrol
- Waterfront available:** No
- AttachedGarageYN:** No
- PoolPrivateYN:** No

