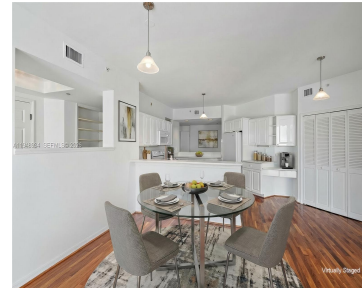


1660 HIGHWAY A1A, JUPITER, FL, 33477

<https://igorpresman.com>

1660 Highway A1A,
Jupiter, FL, 33477



Life is grand at Jupiter By The Sea - from the moment you enter this light, bright, airy condo you will be enthralled with the breathtaking views of the turquoise blue water of the Atlantic Ocean. This is a full front to back wrap unit with sunrises and sunsets, expansive balconies and new impact windows [...]

- 3 beds
- 2 baths
- Residential
- Condominium
- Active
- 2200 sq ft



Rooms



Room type	Dimensions	Area	Length	Width
Kitchen	14.1 x 18.6	262.26	14.1	18.6
LivingRoom	13.11 x 17.6	230.736	13.11	17.6
PrimaryBedroom	17.6 x 13.9	244.64	17.6	13.9
ThirdBedroom	13.7 x 16.8	230.16	13.7	16.8
SecondBedroom	12.11 x 12.5	151.375	12.11	12.5

Building Details

Cooling features: Central Air

NewConstructionYN: No

Building Name: Jupiter By The Sea

Heating: Central

Exterior material: CBS Construction

Parking: 1 Space, Additional Spaces Available, Covered, Parking-Under Building

Amenities & Features

Features: Built-in Features, Closet Cabinetry, Family Room, Laundry Tub, Split Bedroom, Storage, Utility Room/Laundry, Walk-In Closet(s)

Security Features: Lobby Secured

Amenities: Dishwasher, Disposal, Dryer, Electric Range, Microwave, Refrigerator, Washer

WindowFeatures: Impact Glass

ExteriorFeatures: East Of Us1, Open Balcony

Waterfront available: Yes

GarageYN: Yes

AttachedGarageYN: No

CoolingYN: Yes

PoolPrivateYN: No

FireplaceYN: No

