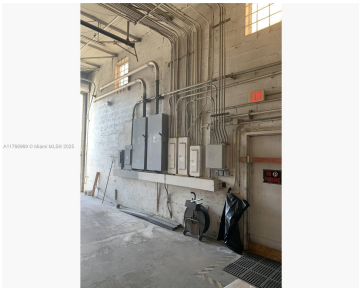
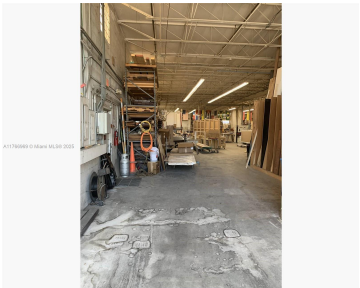


1677 31ST PL, HIALEAH, FL, 33012  
https://igorpresman.com

1677 31st Pl,  
Hialeah, FL, 33012



This 16,100 sqft warehouse features 4 grade-level doors, with street access at both the front and back, offering flexibility for logistics and operations. The property includes dedicated office space, providing a functional workspace alongside warehouse operations. Located just a few miles from Okeechobee Metrorail, Palmetto Metrorail, it offers excellent transit connectivity. With its recent 40-year [...]

- Commercial Sale
- Industrial
- Active



## Building Details

NewConstructionYN: No

## Amenities & Features



**Waterfront available:** No

**AttachedGarageYN:** No

**PoolPrivateYN:** No

**GarageYN:** No

**CoolingYN:** No

**FireplaceYN:** No

