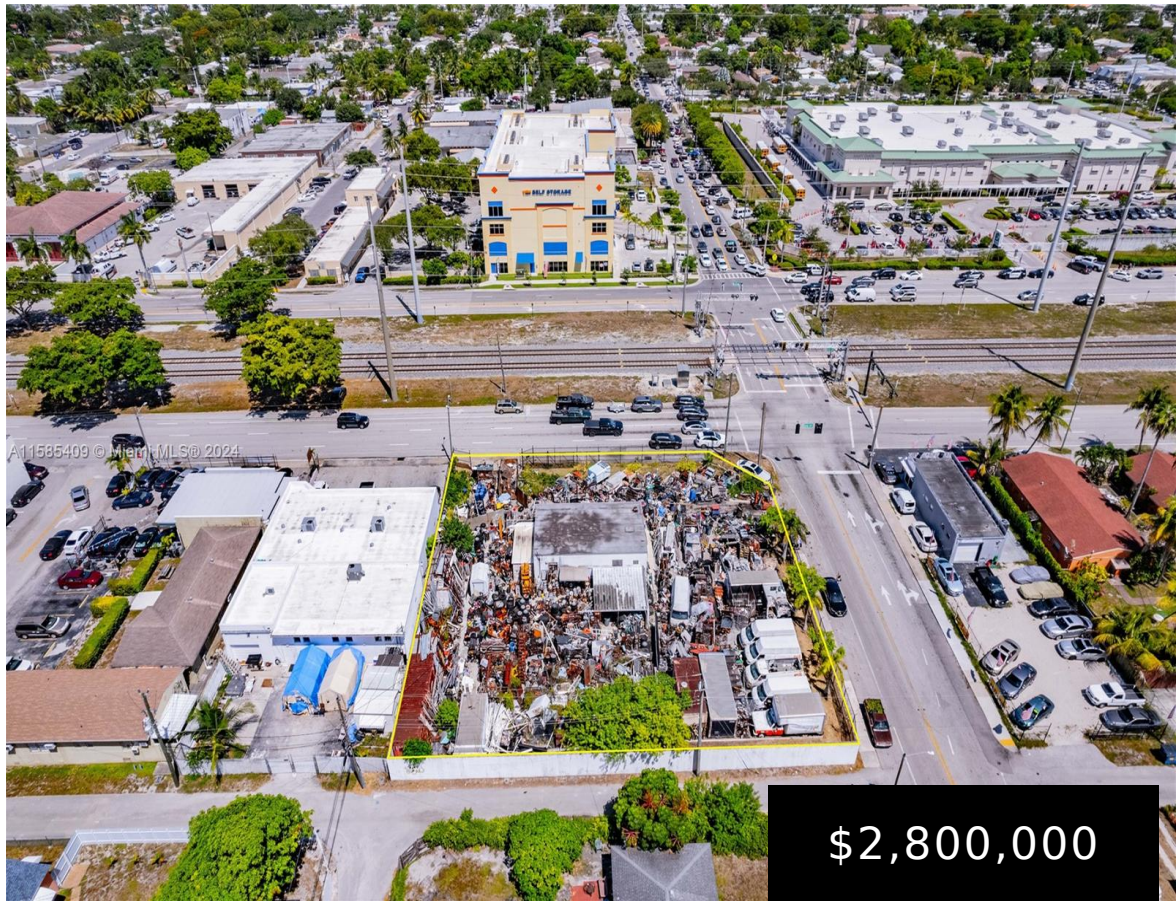


1708 DIXIE HWY, HOLLYWOOD, FL, 33020

https://igorpresman.com

1708 Dixie Hwy,
Hollywood, FL,
33020



Excellent location on the corner of N. Dixie HWY & Taft ST. Lot totals approximately 1/2 acre (21,261SF); with great frontage space, on both N. Dixie HWY & Taft ST, totaling approx. 142 ft & 150 ft, respectively. Zoned DH-3; presents significant opportunities for development, with comparable parcels having secured approval for 10-story buildings housing [...]

- Commercial Land
- Active



Building Details

NewConstructionYN: No

Building Name: HOLLYWOOD PARK

Amenities & Features



Waterfront available: No

AttachedGarageYN: No

PoolPrivateYN: No

GarageYN: No

CoolingYN: No

FireplaceYN: No

