

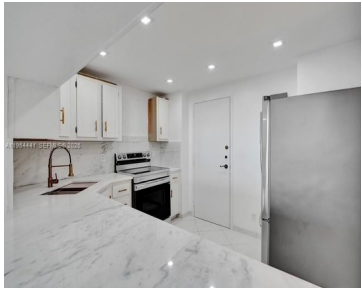
1865 OCEAN DR, HALLANDALE BEACH, FL, 33009

<https://igorpresman.com>

1865 Ocean Dr,
Hallandale Beach,
FL, 33009



\$325,000



Spacious corner 1300 SQ. FT. 1BD/2BA (MASTER BEDROOM HAS BEEN DIVIDED TO CREATE A SMALL SECOND BEDROOM) at the Prince George in Hallandale Beach, just across from the ocean and city park. Rarely available line and best price in the building! This high-floor moderately updated residence offers Intracoastal views from a large balcony with yacht [...]

- 1 bed
- 2 baths
- Residential
- Condominium
- Active
- 1300 sq ft



Building Details



Cooling features: Central Air, Electric

NewConstructionYN: No

Heating: Central, Electric

Parking: 1 Space, No Rv/Boats, Other, Parking-Under Building

ArchitecturalStyle: High Rise

Building Name: PRINCE GEORGE ARMS CONDO

Exterior material: CBS Construction

Amenities & Features

Features: First Floor Entry, Lobby, Split Bedroom, Storage

Amenities: Disposal, Electric Range, Refrigerator, Trash compactor

Waterfront available: Yes

AttachedGarageYN: No

PoolPrivateYN: No

Security Features: Smoke Detector, Card Entry, Guard At Site

ExteriorFeatures: East Of Us1, Open Balcony

GarageYN: Yes

CoolingYN: Yes

FireplaceYN: No

