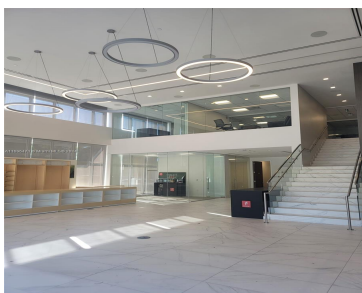
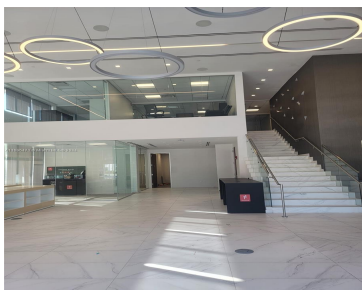


1950 87 AVE, DORAL, FL, 33172
https://igorpresman.com

1950 87 ave, Doral,
FL, 33172



High traffic volume, retail or professional office, End Cap Unit, direct Plaza entrance exposure, high ceiling entry, reception area, open floor showroom, 2 offices, lunch room, ample storage, phone/computer room on first floor, stair case and elevator to second floor, 5 glassed view offices, 3 cubical spaces, and conference room area. Less than one mile [...]

- Commercial Sale
- Retail
- Active



Building Details

Cooling features: Central Building A/C	NewConstructionYN: No
Exterior material: CBS Construction, Concrete Block Construction	Heating: Central Electric
Parking: Common, Free Parking	

Amenities & Features



Security Features: Smoke Alarm

GarageYN: No

CoolingYN: Yes

FireplaceYN: No

Waterfront available: No

AttachedGarageYN: No

PoolPrivateYN: No

