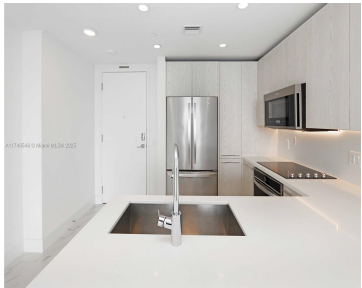
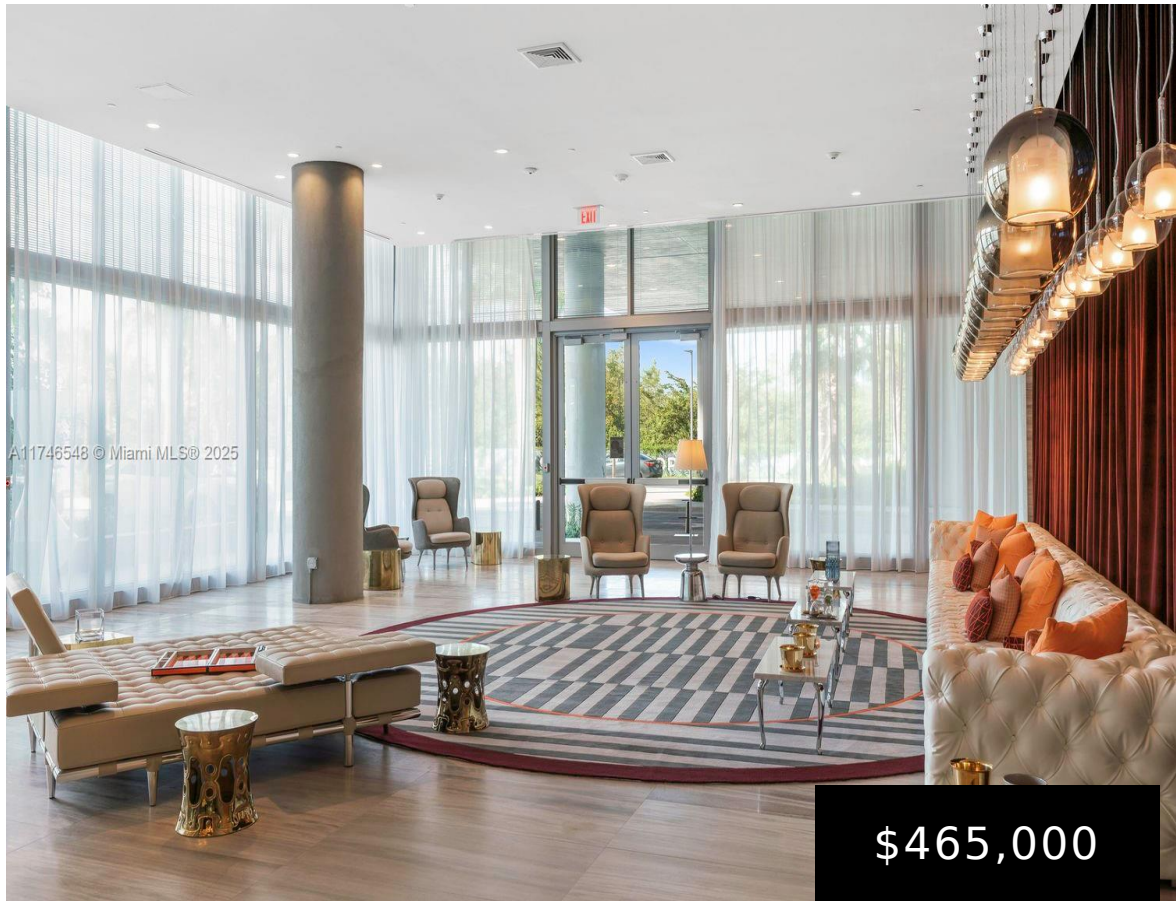


2000 METROPICA WAY, SUNRISE, FL, 33323
https://igorpresman.com

2000 Metropica
Way, Sunrise, FL,
33323



This stunning modern residence showcases interiors designed by the world-renowned London-based YOO Design Studio and features Italkraft cabinetry, imported porcelain tile floors, and Hansgrohe plumbing fixtures. Each bedroom has a customized walk-in closet and floor-to-ceiling sliding doors that lead to the spacious balcony. The balcony faces south, and its length allows visibility of both the [...]

- 2 beds
- 2 baths
- Residential
- Condominium
- Active
- 877 sq ft



Rooms



Room type	Dimensions	Area	Length	Width
SecondBedroom	12'4" X 10'0"	123.333333	12.333333	10
PrimaryBedroom	12'2" X 11'2"	135.861111	12.166666	11.166666
PatioBalcony	39'2"x6'0"	235	39.166666	6

Building Details

Cooling features: Central Air

ArchitecturalStyle: High Rise

NewConstructionYN: No

Building Name: METROPICA NORTH TOWER ONE

Exterior material: Concrete Block Construction

Heating: Central

Parking: 1 Space, Valet

Amenities & Features

Features: Built-in Features, Closet Cabinetry, Elevator, Fire Sprinklers, First Floor Entry, Great Room

Security Features: Fire Sprinklers, Doorman, Elevator Secure, Card Entry, Fire Alarm, Secured Garage/Parking, Lobby Secured

Amenities: Dishwasher, Disposal, Dryer, Microwave, Refrigerator, Washer

WindowFeatures: Complete Impact Glass, Blinds, High Impact Windows

ExteriorFeatures: Open Balcony

Waterfront available: No

GarageYN: Yes

AttachedGarageYN: No

CoolingYN: Yes

PoolPrivateYN: No

FireplaceYN: No

