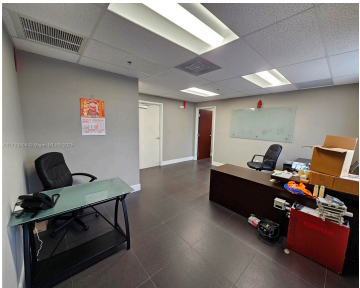
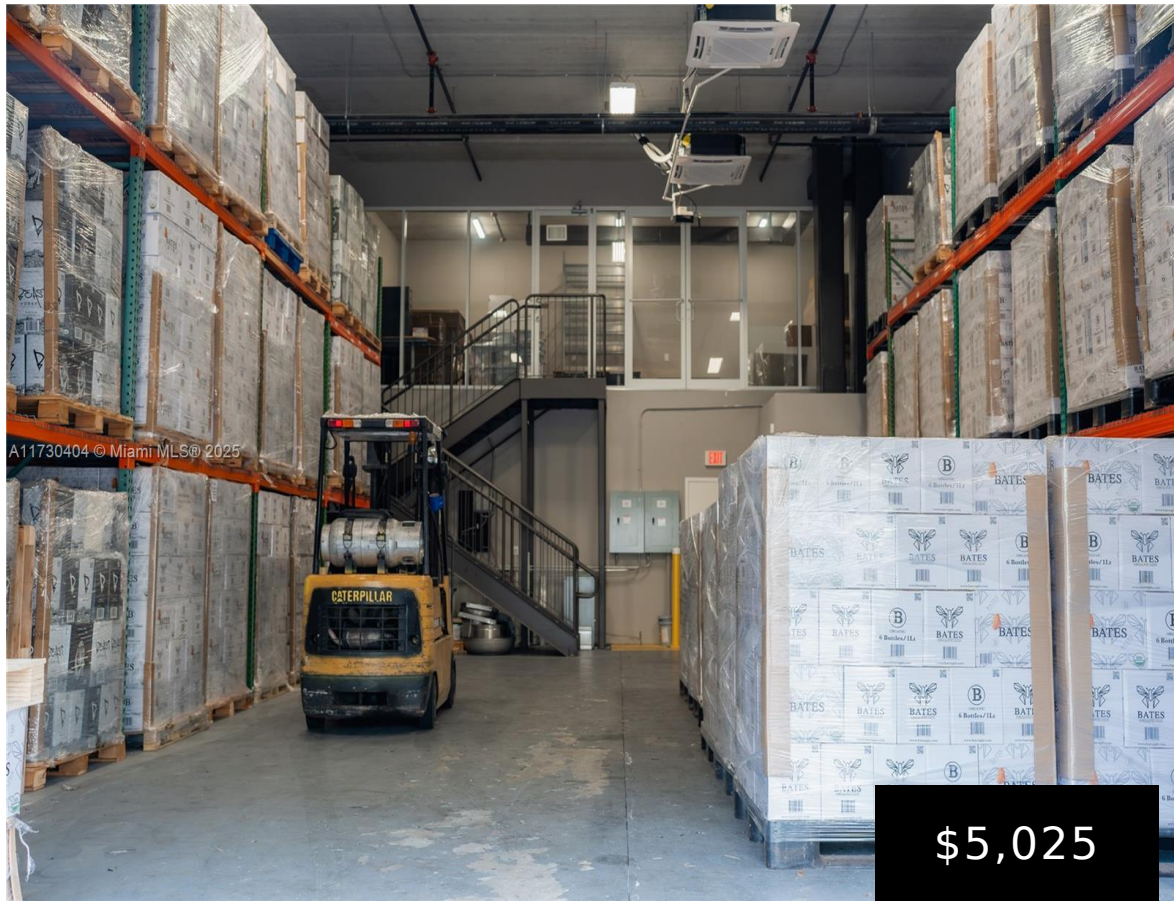


2033 135TH AVE, SWEETWATER, FL, 33182

<https://igorpresman.com>

2033 135th Ave,
Sweetwater, FL,
33182



Strategically located in Sweetwater just minutes away from both the Turnpike, Dolphin Expressway, and Doral. This property features a climate controlled warehouse with a large enclosed mezzanine.

- Commercial Sale
- Industrial
- Active



Building Details

ParkingTotal: 5

NewConstructionYN: No

Parking: Assigned

Amenities & Features



Waterfront available: No

AttachedGarageYN: No

PoolPrivateYN: No

GarageYN: No

CoolingYN: No

FireplaceYN: No

