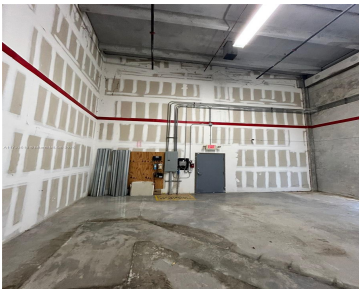
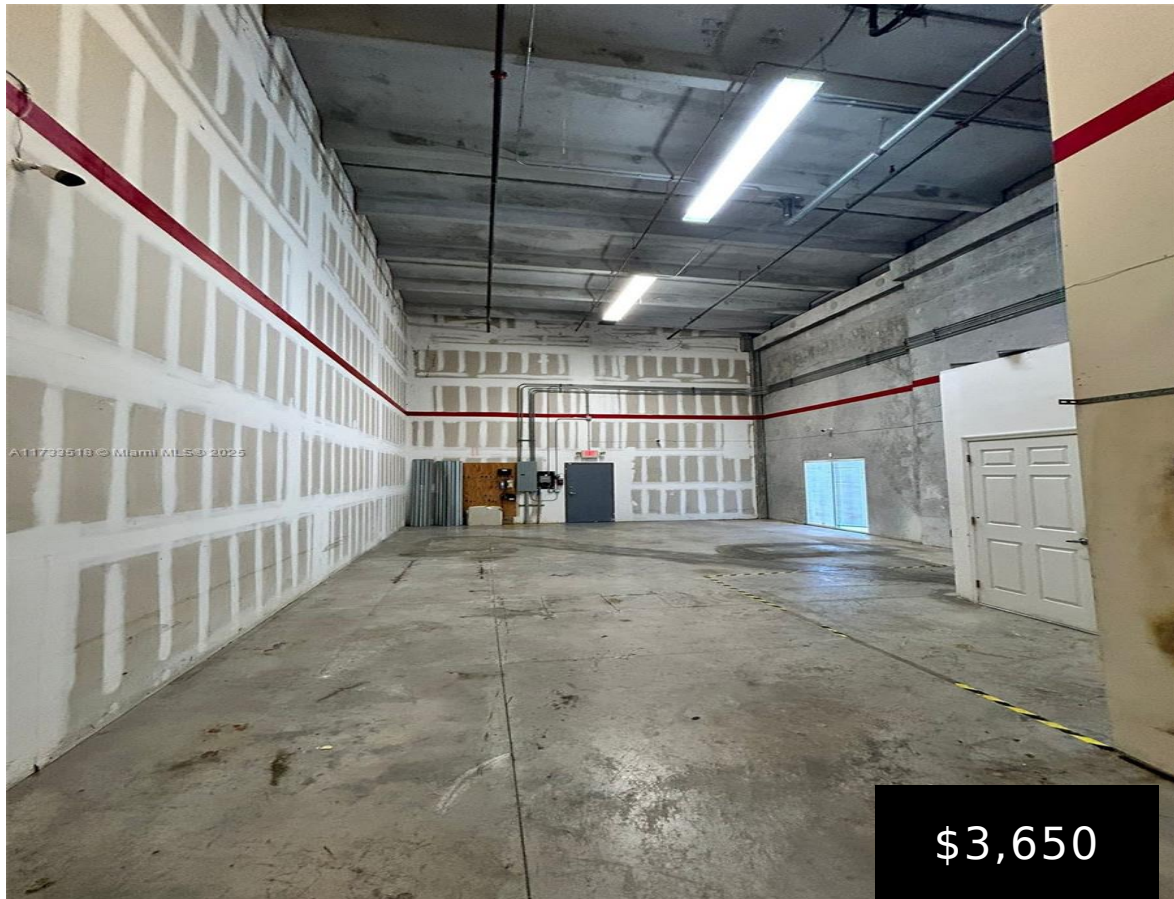


20861 JOHNSON ST, PEMBROKE PINES, FL, 33029

<https://igorpresman.com>

20861 Johnson St,  
Pembroke Pines, FL,  
33029



This 1500 SF unit has 200 sf office, WC and A/C 24", high floor plan, is 25 x 60 ft. Sprinkles, 1 frontage for the office and cargo door with a 12x10 overhead door and auxiliary door. It has 4 parking spaces. Is located in a quite area, between Weston and Pembroke Pines, 12 minutos [...]

- Commercial Sale
- Industrial
- Active



## Building Details

NewConstructionYN: No

Building Name: Chapel Trail Corporate Park

## Amenities & Features



**Waterfront available:** No

**AttachedGarageYN:** No

**PoolPrivateYN:** No

**GarageYN:** No

**CoolingYN:** No

**FireplaceYN:** No

