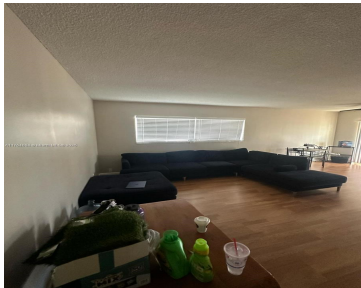


2101 68TH ST, FORT LAUDERDALE, FL, 33308

<https://igorpresman.com>

2101 68th St, Fort
Lauderdale, FL,
33308



Investors great opportunity with no rental restrictions on the first year. Top floor 2/2 Condo in Imperial Point 2nd Floor unit. There is a private, storage area & coin washer/dryer. Life in Imperial Point blends beachside relaxation with vibrant neighborhood activity. With proximity to Lauderdale-by-the-Sea, this area transforms weekends into mini beach escapes, offering snorkeling, [...]

- 2 beds
- 2 baths
- Residential
- Condominium
- Active
- 930 sq ft



Building Details

Cooling features: Central Air
NewConstructionYN: No
Exterior material: CBS Construction
Parking: Limited # Of Vehicle, No Rv/Boats, Other

ArchitecturalStyle: Corner Unit
Building Name: ASHLEY HOUSE CONDO
Heating: Central





Amenities & Features

Features: No Interior Features, Walk-In Closet(s)
Amenities: Refrigerator
Waterfront available: No
AttachedGarageYN: No
PoolPrivateYN: No

Security Features: No Security
ExteriorFeatures: Exterior Cat Walk, West Of Us1
GarageYN: Yes
CoolingYN: Yes
FireplaceYN: No

