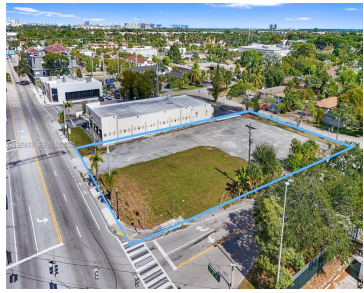
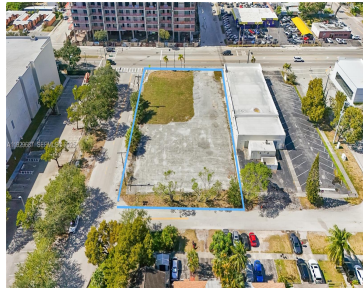
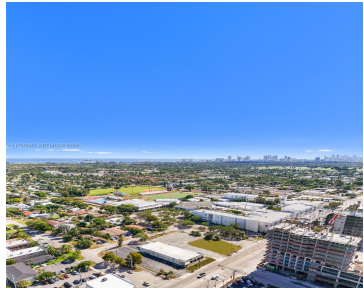


# 2105 FEDERAL HWY, HOLLYWOOD, FL, 33020

<https://igorpresman.com>

2105 Federal Hwy,  
Hollywood, FL,  
33020



**\$3,699,000**

Prime development opportunity on Federal Highway in Hollywood, Florida. This ~0.62-acre, corner, and signalized vacant commercial parcel zoned FH-2 offers 127 feet of frontage along N Federal Highway, providing exceptional visibility, strong traffic counts, and unmatched positioning along a major north-south corridor. The property sits directly across from Broward High School, offering a built-in daytime [...]

- Commercial Land
- Commercial
- Active



## Building Details

**NewConstructionYN:** No

**Building Name:** HOLLYWOOD HOMESITES REV P

## Amenities & Features



**Waterfront available:** No

**AttachedGarageYN:** No

**PoolPrivateYN:** No

**GarageYN:** No

**CoolingYN:** No

**FireplaceYN:** No

