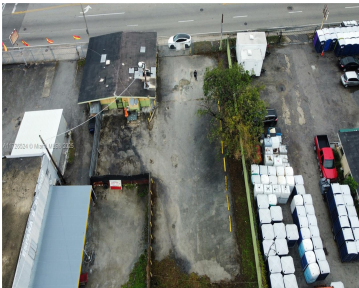
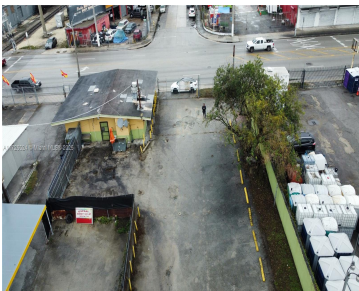
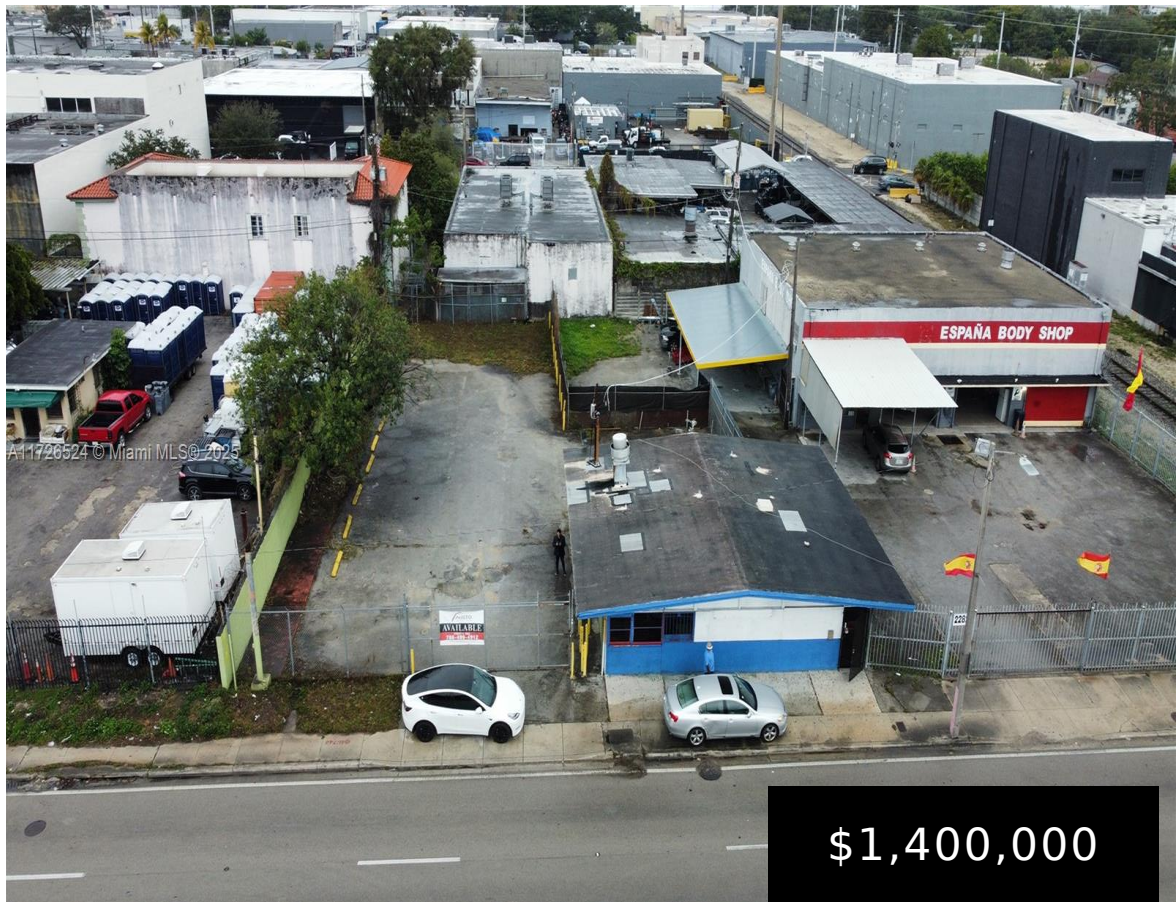


2200 22ND AVE, MIAMI, FL, 33142

<https://igorpresman.com>

2200 22nd Ave,
Miami, FL, 33142



13,150sf Industrial Lot for any industrial application, with current on-site Cafeteria/Restaurant and Potential for Residential Development via Live-Local. Site has direct frontage on nw 22 ave, a significant north-south commercial corridor that runs the full length of Miami Dade County, connecting many critical neighborhoods. Site has industrial zoning, permitting for any related use such as [...]

- Commercial Sale
- Industrial
- Active



Building Details

NewConstructionYN: No

Parking: Assigned

Amenities & Features



Waterfront available: No

AttachedGarageYN: No

PoolPrivateYN: No

GarageYN: No

CoolingYN: No

FireplaceYN: No

