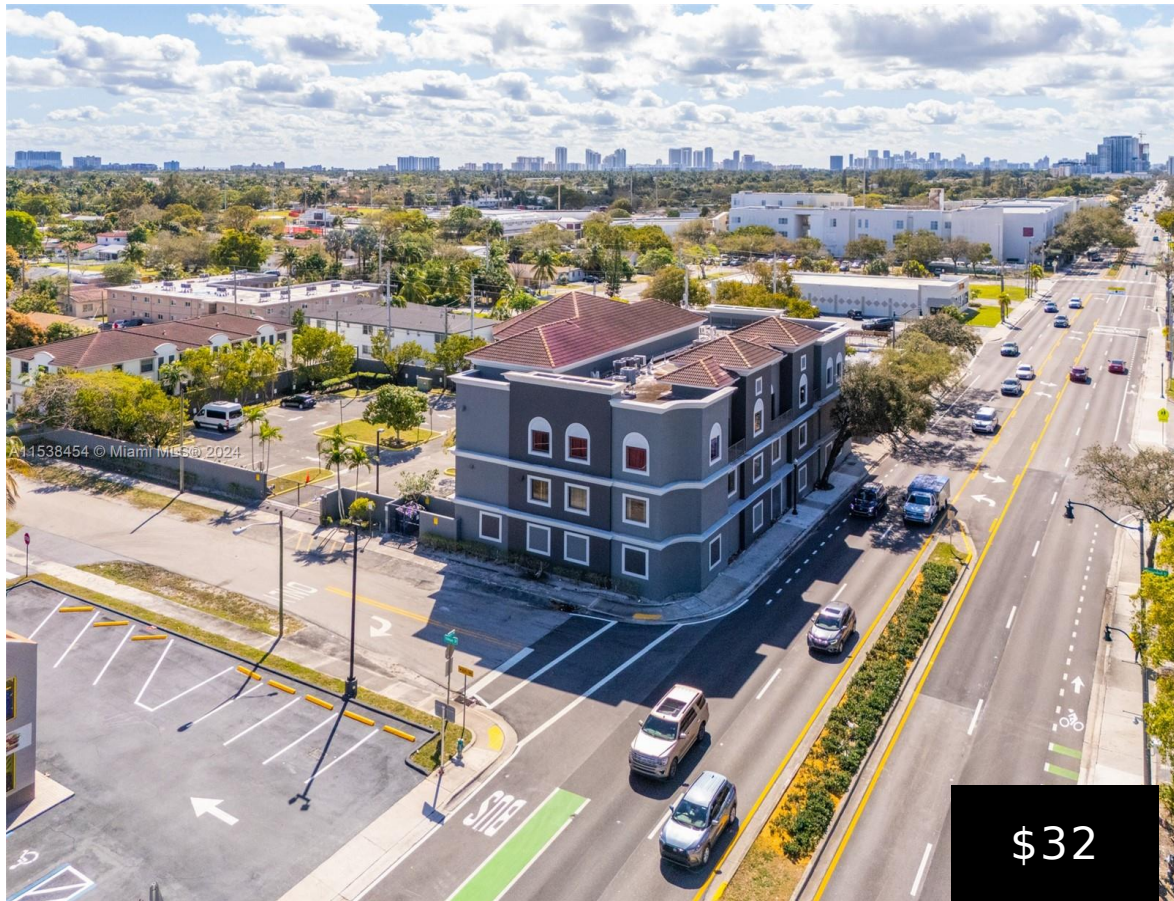


2227 FEDERAL HWY, HOLLYWOOD, FL, 33020

https://igorpresman.com

2227 Federal Hwy,
Hollywood, FL,
33020



Ideally located at the NE corner of Sheridan St. and N. Federal Highway this professional building offers private interior and windowed individual offices ranging in size from 96-2,015 SF. All are available with ample free parking in this secure property with coded gate parking lot and main entry door. This modified gross lease includes electricity [...]

- Commercial Sale
- Office
- Active



Building Details

Cooling features: Central Building A/C, Other
NewConstructionYN: No
Heating: Central Electric

ParkingTotal: 27
Roof: Barrel Roof, Composition Roll, Other
Parking: Common, Free Parking





Amenities & Features

Security Features: Smoke Alarm, Smoke Detector(s), Fire Sprinkler System, Security Fence

Waterfront available: No

AttachedGarageYN: No

PoolPrivateYN: No

WindowFeatures: Clear Impact Glass

GarageYN: No

CoolingYN: Yes

FireplaceYN: No

