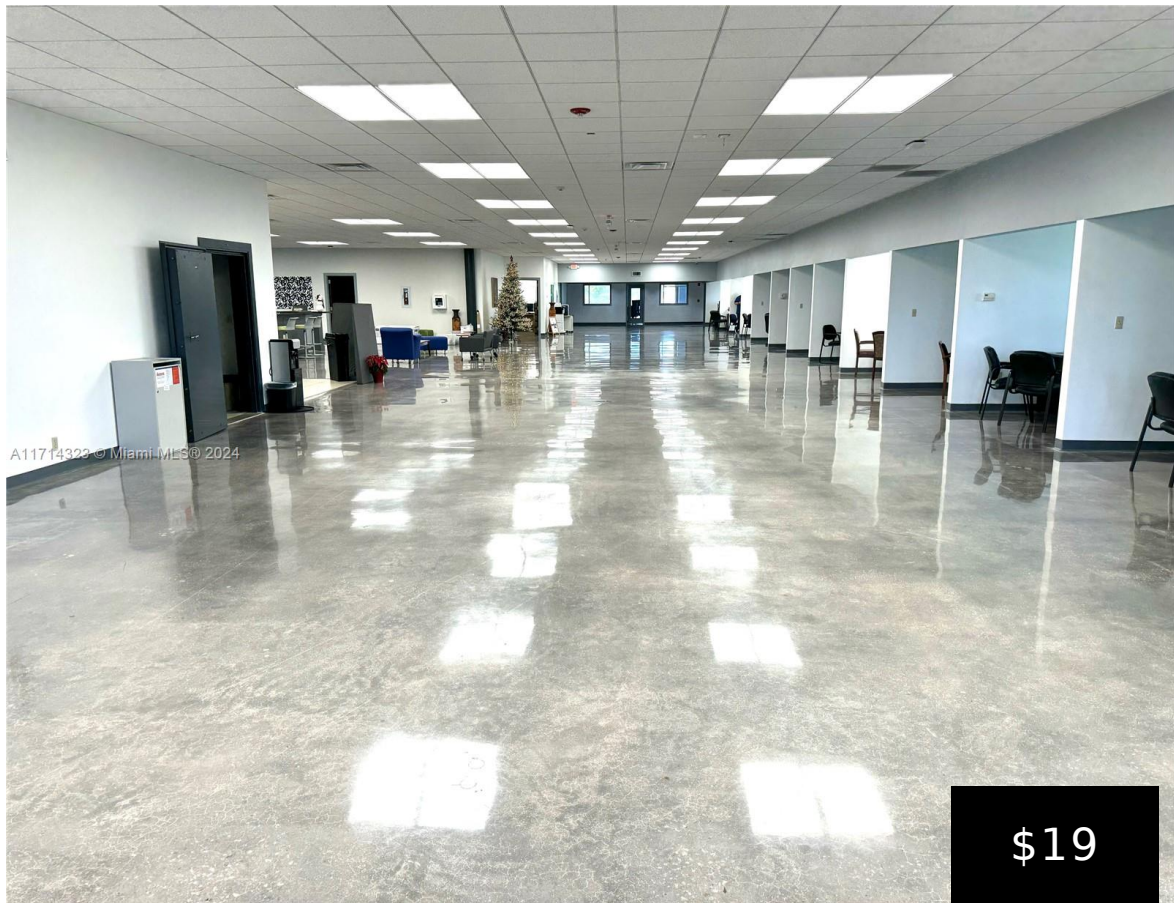
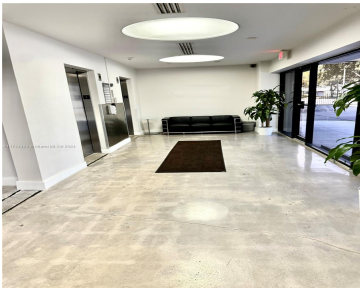


2300 89TH PL, DORAL, FL, 33172
https://igorpresman.com

2300 89th Pl, Doral,
FL, 33172



A11714322 © Miami MLS © 2024



LOWEST Lease rate in Doral! \$19 PSF (Modified Gross)Prime Sublease
Available in the heart of Doral, lowest lease rate in the area. Class A building,
12,000 SF, gated parking, security access control. Mostly open plan with 17
open layout cubicles and 11 private offices/conference room. State of the art
kitchen and bar, outdoor terrace, two [...]

- Commercial Sale
- Office
- Active



Building Details

ParkingTotal: 75

Parking: Assigned

NewConstructionYN: No

Amenities & Features



Waterfront available: No

AttachedGarageYN: No

PoolPrivateYN: No

GarageYN: No

CoolingYN: No

FireplaceYN: No

