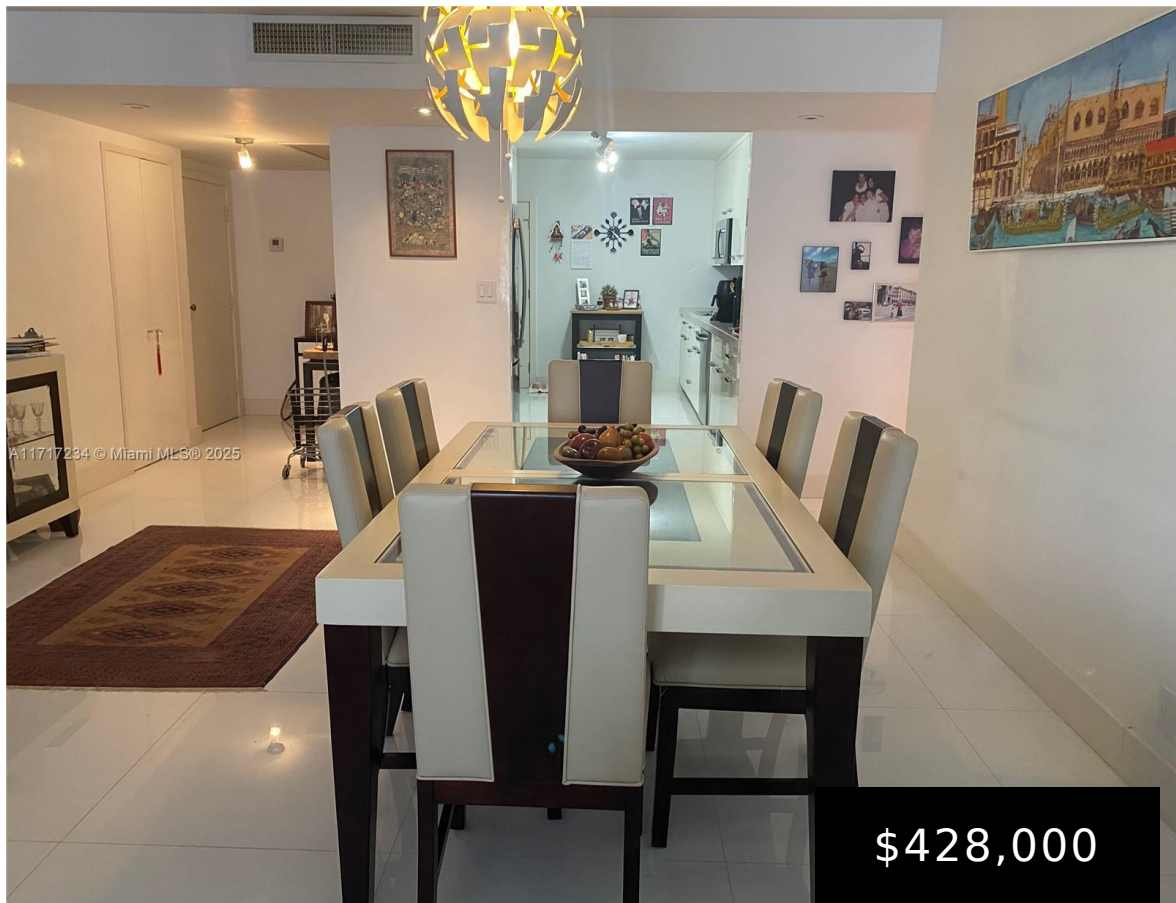


2500 PARKVIEW DR, HALLANDALE BEACH, FL, 33009

https://igorpresman.com

2500 Parkview Dr,
Hallandale Beach,
FL, 33009



\$428,000

Completely updated and renovated with design finishes. Priced to sell. European style kitchen with high end cabinets, stainless steel appliances. Stone counters with mirror backsplash. Both bathrooms have Micassa ebony cabinetry. Walls in the living room are of venetian plaster. Master has a huge walk in closet. Amenities include: Olympic size pool, tennis courts, marina, [...]

- 2 beds
- 2 baths
- Residential
- Condominium
- Active
- 1580 sq ft



Building Details

Cooling features: Electric
NewConstructionYN: No
Heating: Electric

ArchitecturalStyle: Corner Unit
Building Name: Olympus
Parking: 1 Space, Assigned, Covered





Amenities & Features

Features: Built-in Features, Closet Cabinetry, First Floor Entry, Walk-In Closet(s)

Amenities: Dishwasher, Disposal, Electric Range, Microwave, Refrigerator, Trash compactor, Wall Oven

Waterfront available: Yes

AttachedGarageYN: No

PoolPrivateYN: No

Security Features: Fire Alarm, Smoke Detector, Complex Fenced, Doorman, Lobby Secured

ExteriorFeatures: East Of Us1, Open Balcony, Tennis Court(s)

GarageYN: Yes

CoolingYN: Yes

FireplaceYN: No

