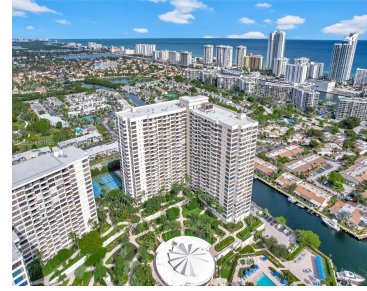
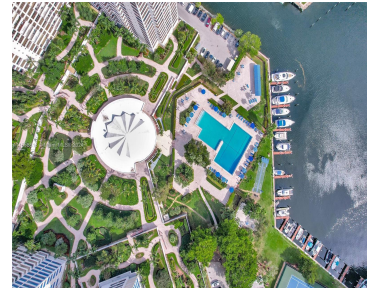


# 2500 PARKVIEW DR, HALLANDALE BEACH, FL, 33009

<https://igorpresman.com>

2500 Parkview Dr,  
Hallandale Beach,  
FL, 33009



\$469,900

PRICE TO SELL! Discover this large corner 2-bedroom, 2-bathroom beauty on the 22nd floor, offering abundant natural light and unobstructed northeast ocean views. Featuring gorgeous Spanish wood flooring throughout and a spacious, stylishly decorated interior. The kitchen is generous in size, complemented by a new water heater. Located in the prestigious Olympus Condominium, this building [...]

- 2 beds
- 2 baths
- Residential
- Condominium
- Active
- 1580 sq ft



## Building Details

**Cooling features:** Electric

**NewConstructionYN:** No

**Heating:** Electric

**Parking:** 1 Space, No Rv/Boats, No Trucks/Trailers

**ArchitecturalStyle:** Corner Unit, High Rise

**Building Name:** the olympus

**Exterior material:** CBS Construction



---

## Amenities & Features

**Features:** First Floor Entry, Walk-In Closet(s)

**Amenities:** Dishwasher, Disposal, Electric Range, Microwave, Refrigerator, Water Softener Owned

**Waterfront available:** Yes

**AttachedGarageYN:** No

**PoolPrivateYN:** No

**Security Features:** Fire Alarm, Smoke Detector, Doorman, Elevator Secure, Card Entry

**ExteriorFeatures:** East Of Us1, Other

**GarageYN:** Yes

**CoolingYN:** Yes

**FireplaceYN:** No

