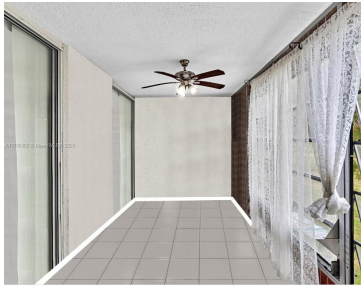
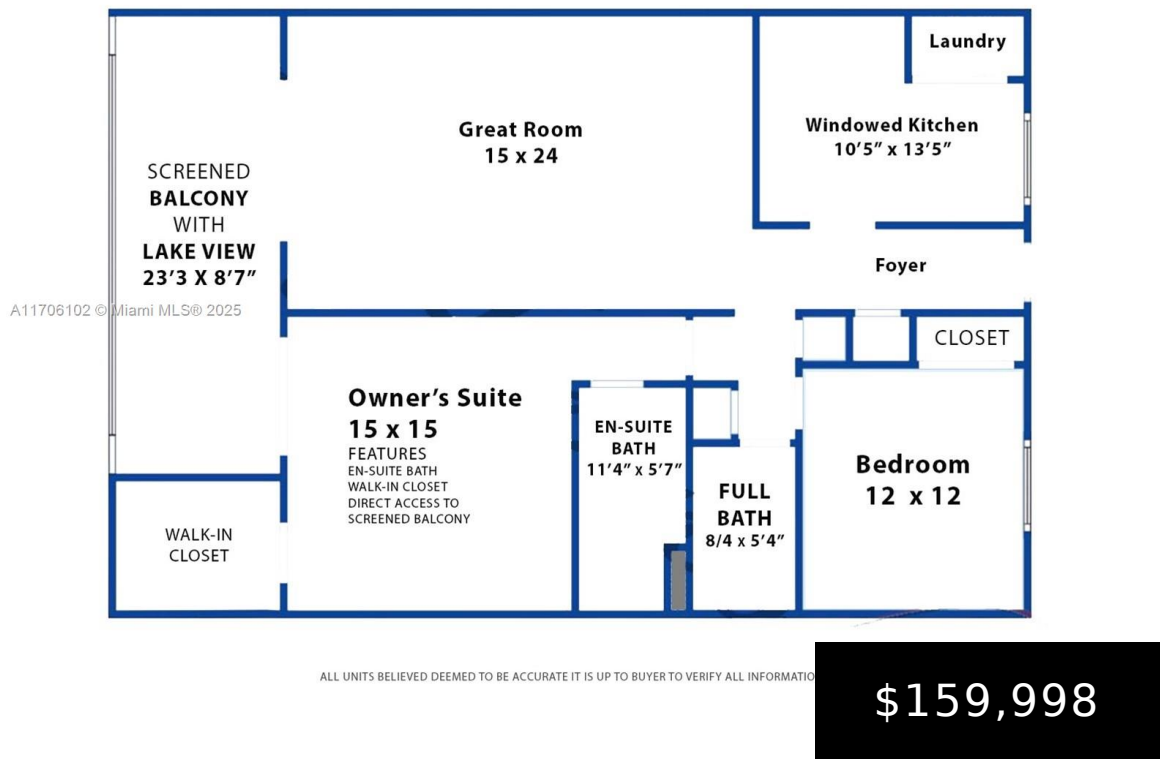


2 BED 2 BATH 1100 SQFT



Serene lake view home in the beautiful community of Palm Lakes. This warm and welcoming home offers a huge kitchen with European flat panel doors, wrap around counter and passthrough kitchen window. Additionally, this home features a washer and dryer and extra storage locker by the elevator. The screened balcony offers picturesque view of the [...]

- 2 beds
- 2 baths
- Residential
- Condominium
- Active
- 1100 sq ft



Building Details

Cooling features: Ceiling Fan(s), Central Air
NewConstructionYN: No
Exterior material: CBS Construction
Parking: 1 Space

ArchitecturalStyle: Garden Apartment
Building Name: Palm Lakes
Heating: Central





Amenities & Features

Features: Elevator, Fire Sprinklers, First Floor Entry, Pantry, Split Bedroom, Walk-In Closet(s)

Amenities: Disposal, Electric Water Heater, Microwave, Wall Oven

GarageYN: No

CoolingYN: Yes

FireplaceYN: No

Security Features: Fire Sprinklers, Fire Alarm, Smoke Detector, No Security

Waterfront available: No

AttachedGarageYN: No

PoolPrivateYN: No

