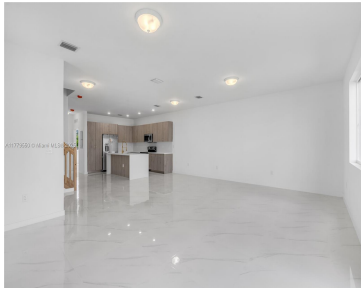
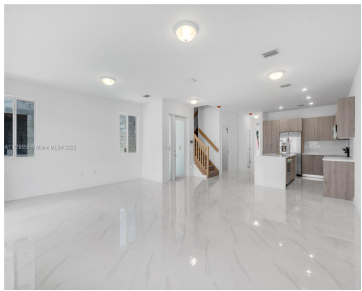


28828 162ND AVE, HOMESTEAD, FL, 33033

<https://igorpresman.com>

28828 162nd Ave,
Homestead, FL,
33033



Discover exceptional value with Chloe's Estates, where spacious twin homes offer 2,500 sq. ft. of living space. Choose from two unique models designed for comfort and privacy, featuring high-end finishes like stainless steel appliances, quartz countertops, and 32×32 rectified tiles. Enjoy high ceilings, waterproof vinyl flooring on the second floor, and large backyards big enough [...]

- 5 beds
- 3 baths
- Residential
- Townhouse
- Active
- 3463 sq ft



Building Details

Cooling features: Central Air, Electric
NewConstructionYN: No
Exterior material: CBS Construction
Parking: 2 Or More Spaces

ArchitecturalStyle: Twin Home
Building Name: ISABELLA MARIES PLACE
Heating: Central, Electric





Amenities & Features

Features: First Floor Entry

Amenities: Dishwasher, Disposal, Electric Water Heater, Microwave, Refrigerator

GarageYN: Yes

CoolingYN: Yes

FireplaceYN: No

Security Features: Smoke Detector, No Security

Waterfront available: No

AttachedGarageYN: No

PoolPrivateYN: No

