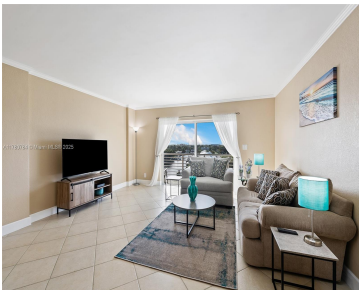


2900 30TH ST, FORT LAUDERDALE, FL, 33306

https://igorpresman.com

2900 30th St, Fort
Lauderdale, FL,
33306



\$3,950

If breathtaking views and easy living is what you're looking for, then you've found it! Intercoastal and canal water views from every room of this corner 2/2 condo at Lauderdale Tower in Coral Ridge. Fully furnished with a queen size Temper-Pedic mattress and a king size Saatva Organic Cotton Mattress. This unit features stainless steel [...]

- 2 beds
- 2 baths
- Residential Lease
- Condominium
- Active
- 1040 sq ft



Building Details

NewConstructionYN: No

Building Name: LAUDERDALE TOWER
CONDO

Exterior material: Concrete Block Construction **Parking:** 1 Space





Amenities & Features

Features: Cooking Island, Entrance Foyer, Pantry, Stacked Bedroom

Amenities: Dishwasher, Disposal, Microwave, Refrigerator

PoolFeatures: In Ground, Community

GarageYN: No

CoolingYN: No

FireplaceYN: No

Security Features: Key Card Entry, Lobby Attended

ExteriorFeatures: Barbeque, Open Balcony

Waterfront available: Yes

AttachedGarageYN: No

PoolPrivateYN: No

