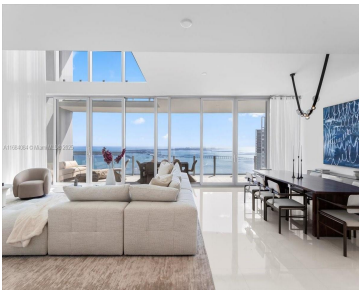


300 BISCAYNE BLVD WAY, MIAMI, FL, 33131

https://igorpresman.com

300 Biscayne Blvd  
Way, Miami, FL,  
33131



Sky Villa 5002: The highest & largest Sky residence at Aston Martin Miami. 1 of only 3 duplexes in the entire building. Double-height ceilings & windows offer unmatched turquoise water views and the iconic Brickell skyline. This nearly 5,000 total SqFt flow-through residence boasts 5 beds + den, 5.5 baths, 2 massive terraces, and includes [...]

- 5 beds
- 5 baths
- Residential
- Condominium
- Active
- 4283 sq ft



Building Details



**Cooling features:** Central Air

**NewConstructionYN:** Yes

**Exterior material:** CBS Construction, Concrete Block Construction

**Parking:** 2 Or More Spaces, Assigned, Covered

**ArchitecturalStyle:** High Rise, Split Level

**Building Name:** Aston Martin Residences

**Heating:** Electric

## Amenities & Features

**Features:** Cooking Island, Custom Mirrors, Entrance Foyer, Vaulted Ceiling(s), Volume Ceilings, Walk-In Closet(s)

**Amenities:** Dishwasher, Disposal, Dryer, Electric Range, Microwave, Refrigerator, Wall Oven, Washer

**ExteriorFeatures:** East Of Us1, Open Balcony

**GarageYN:** Yes

**CoolingYN:** Yes

**FireplaceYN:** No

**Security Features:** Doorman, Guard At Site, Lobby Secured

**WindowFeatures:** Complete Impact Glass

**Waterfront available:** Yes

**AttachedGarageYN:** Yes

**PoolPrivateYN:** No

