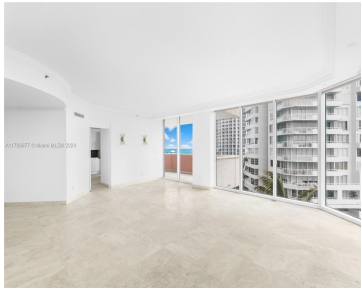
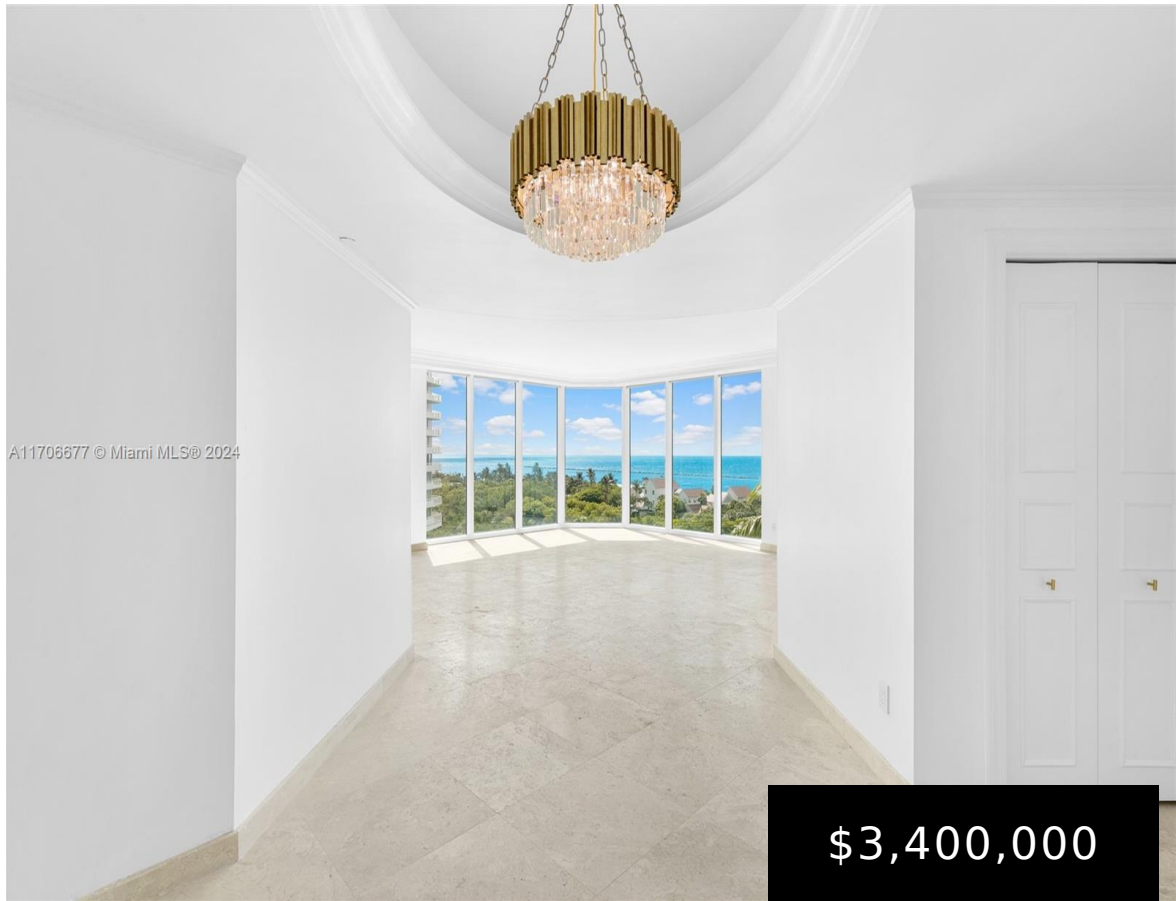


300 POINTE DRIVE, MIAMI BEACH, FL, 33139

https://igorpresman.com

300 Pointe Drive,
Miami Beach, FL,
33139



Step into luxury living at Portofino Tower in the prestigious South of Fifth neighborhood! This stunning 2,340 sq. ft. residence has been beautifully remodeled, offering an unmatched blend of elegance and functionality. Breathtaking Views: Enjoy sweeping vistas of the Atlantic Ocean, Fisher Island, Biscayne Bay, Miami Beach, and the city skyline from two expansive balconies. [...]

- 3 beds
- 2 baths
- Residential
- Condominium
- Active
- 2340 sq ft



Rooms



Room type	Dimensions	Area	Length	Width
ThirdBedroom	12 x 15	180	12	15
PrimaryBedroom	13.8 x 25.8	356.04	13.8	25.8
LivingRoom				
Kitchen	13.8 x 20.4	281.52	13.8	20.4
SecondBedroom	12.6 x 14.8	186.48	12.6	14.8
Grt Rm	24 x 35	840	24	35

Building Details

Cooling features: Central Air	ArchitecturalStyle: Corner Unit, High Rise, Split Level
NewConstructionYN: No	Building Name: Portofino Tower
Exterior material: Elevated Construction, Other, Slab Construction	Heating: Central
Parking: 1 Space, Covered, No Rv/Boats, No Trucks/Trailers, Parking-Under Building	

Amenities & Features



Features: Den/Library/Office, Entrance Foyer, Fire Sprinklers, Great Room, Other, Split Bedroom, Utility Room/Laundry, Walk-In Closet(s)

Amenities: Dishwasher, Disposal, Dryer, Electric Water Heater, Ice Maker, Microwave, Refrigerator, Self Cleaning Oven, Wall Oven, Washer

ExteriorFeatures: Other

GarageYN: Yes

CoolingYN: Yes

FireplaceYN: No

Security Features: Fire Sprinklers, Fire Alarm, Smoke Detector, Complex Fenced, Doorman, Guard At Site

WindowFeatures: Blinds, Impact Glass, Sliding

Waterfront available: Yes

AttachedGarageYN: No

PoolPrivateYN: Yes

