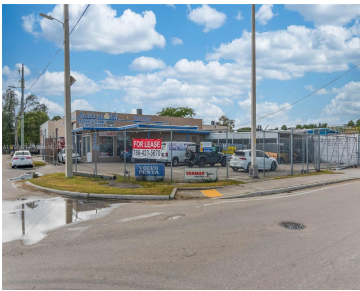


3200 SOUTH RIVER DR, MIAMI, FL, 33142

https://igorpresman.com

3200 South River
Dr, Miami, FL,
33142



Unique corner property facing NW South River Drive in the Palmer Lake district. According to tax roll 7,158 square feet that includes a retail and office space and two warehouses that can be converted into one, additional storage space and 3 bathrooms . Hard to find parking space available in front of the building, zoned [...]

- Commercial Sale
- Mixed Use
- Active



Building Details

NewConstructionYN: No

Amenities & Features



Waterfront available: No

AttachedGarageYN: No

PoolPrivateYN: No

GarageYN: No

CoolingYN: No

FireplaceYN: No

