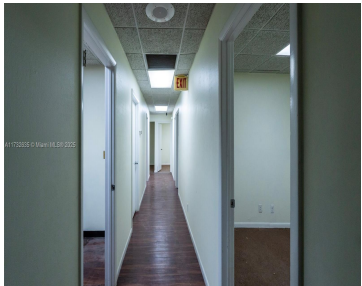
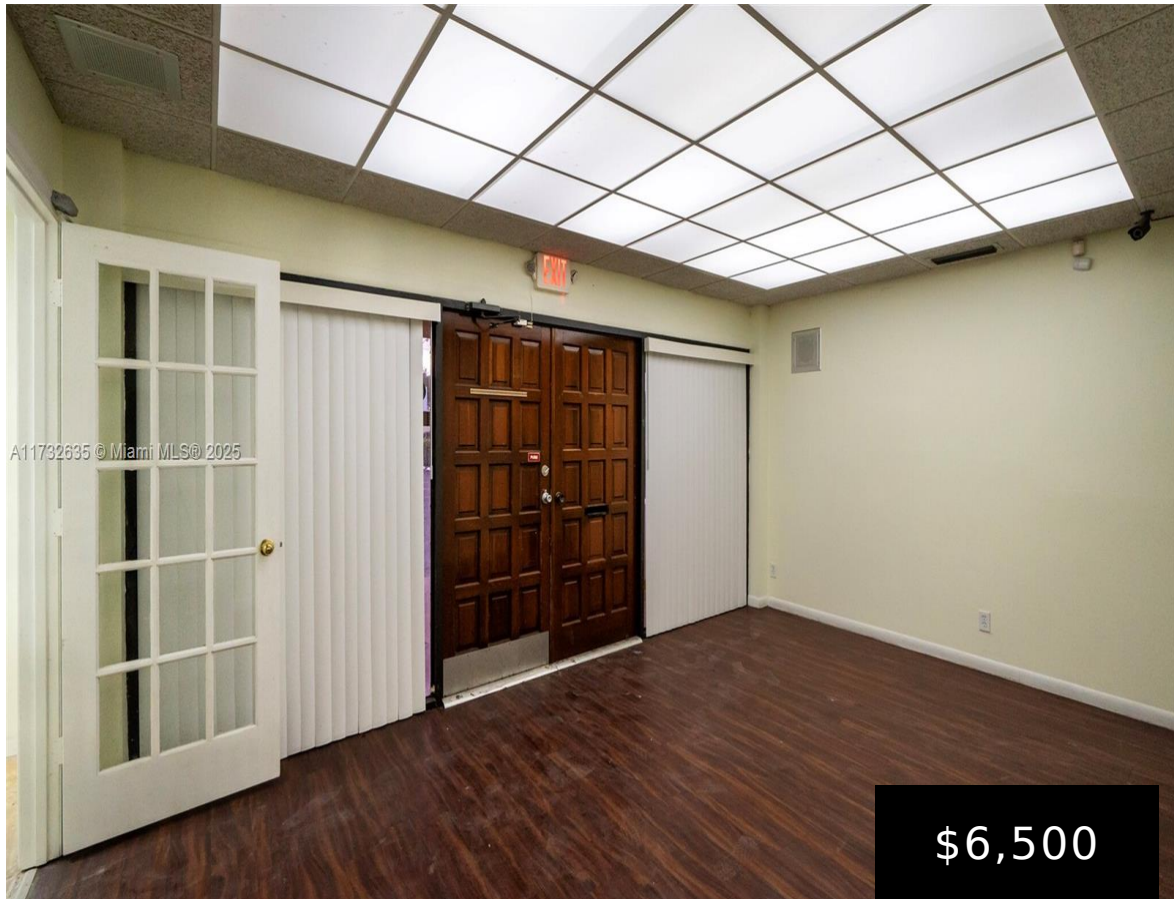


3296 9TH AVE, OAKLAND PARK, FL, 33309
https://igorpresman.com

3296 9th Ave,
Oakland Park, FL,
33309



3296 Powerline Road, Oakland Park, FL 33309, is a freestanding commercial building located on a 0.26-acre lot. It features 2,524 square feet of office space. This location is strategically situated along the Powerline Road corridor, a key commercial area in Oakland Park. The building is ideal for businesses seeking standalone visibility in a high-traffic area?. [...]

- Commercial Sale
- Retail
- Active



Building Details

NewConstructionYN: No

Amenities & Features



Waterfront available: No

AttachedGarageYN: No

PoolPrivateYN: No

GarageYN: No

CoolingYN: No

FireplaceYN: No

