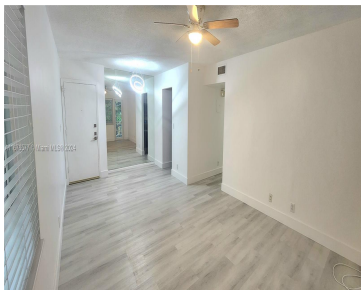


351 19TH PL, WILTON MANORS, FL, 33305  
https://igorpresman.com

351 19th Pl, Wilton  
Manors, FL, 33305



BEAUTIFUL 2 BED 2 BATH CONDO WITH SCREENED IN BALCONY. VERY QUIET CORNER UNIT OVER LOOKING AT THE RICHARDSON HISTORIC PARK. HURRICANE IMPACT WINDOWS AND DOOR. NEWER STAINLESS STEEL APPLIANCES. NEW A/C 2024. SPACIOUS MASTER BEDROOM WITH WALK-IN CLOSET. THIS UNIT COMES WITH A SMALL STORAGE, LOCATED JUST OUTSIDE THE UNIT. CLUBHOUSE WITH FULL KITCHEN, [...]

- 2 beds
- 2 baths
- Residential
- Condominium
- Active
- 1200 sq ft



## Building Details

**Cooling features:** Ceiling Fan(s), Central Air  
**NewConstructionYN:** No  
**Heating:** Central

**ArchitecturalStyle:** Corner Unit  
**Building Name:** MANOR GROVE VILLAGE FOUR  
**Parking:** Assigned, Guest





# Amenities & Features

**Features:** Second Floor Entry, Split Bedroom, Walk-In Closet(s)

**Amenities:** Dishwasher, Disposal, Electric Range, Electric Water Heater, Microwave, Refrigerator

**ExteriorFeatures:** Barbeque, Courtyard, Screened Balcony, Tennis Court(s)

**GarageYN:** No

**CoolingYN:** Yes

**FireplaceYN:** No

**Security Features:** Smoke Detector, No Security

**WindowFeatures:** Complete Impact Glass, High Impact Windows

**Waterfront available:** No

**AttachedGarageYN:** No

**PoolPrivateYN:** No

