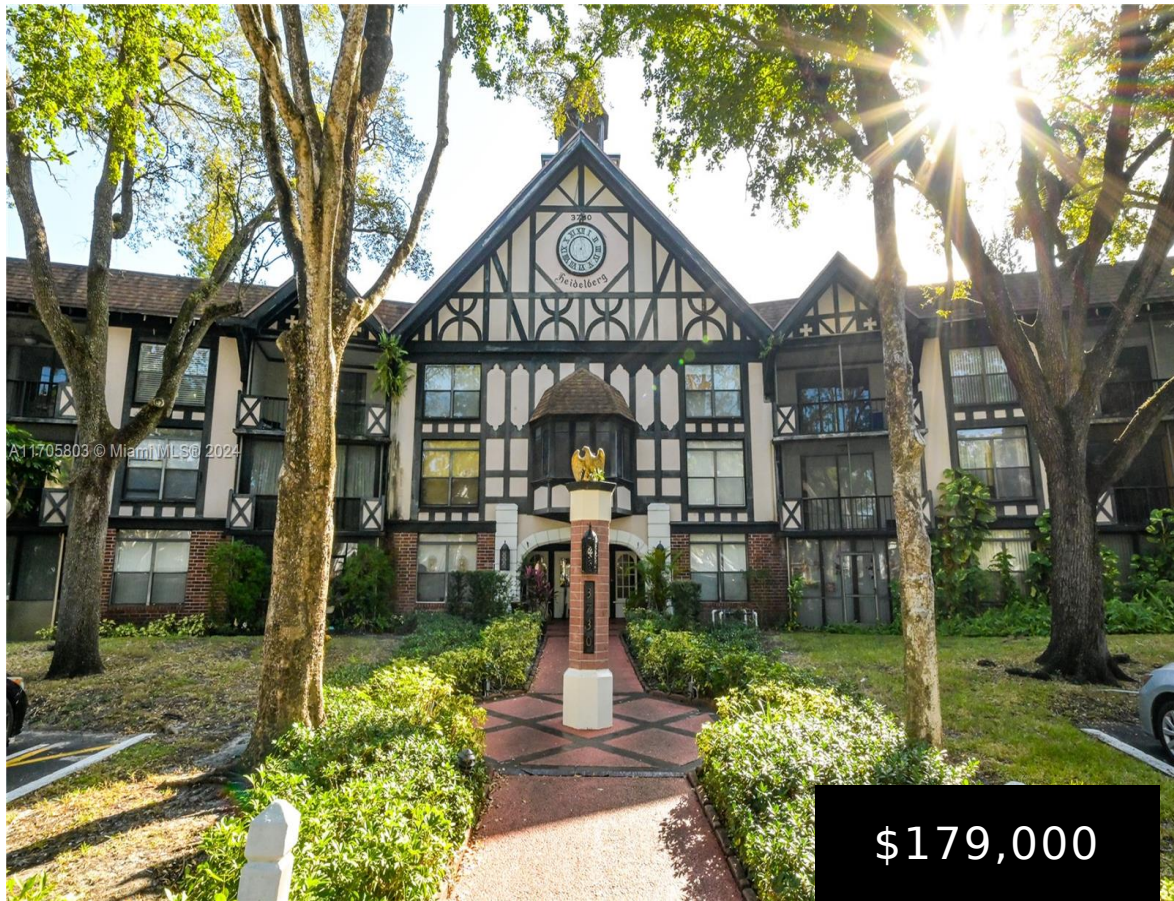


3730 INVERRARY DR, LAUDERHILL, FL, 33319

https://igorpresman.com

3730 Inverrary Dr,
Lauderhill, FL,
33319



NEW PRICE!! A MUST SEE!! COME SEE THE PICTURESQUE WATER VIEWS FROM THIS IMMACULATE CORNER 2 BEDROOM 2 BATHROOM CONDO LOCATED IN THE COMMUNITY OF INTERNATIONAL VILLAGE IN THE HEART OF LAUDERHILL. RELAX OVERLOOKING THE TRANQUIL WATER VIEWS. UNIT LOCATED ON THE 2ND FLOOR. THIS BRIGHT & SPACIOUS UNIT HAS LOTS OF STORAGE CLOSETS. UNIT [...]

- 2 beds
- 2 baths
- Residential
- Condominium
- Active
- 1150 sq ft



Building Details



Cooling features: Central Air

NewConstructionYN: No

Exterior material: CBS Construction

Parking: 1 Space, Assigned, Guest, No Rv/Boats, No Trucks/Trailers

ArchitecturalStyle: Corner Unit, Garden Apartment

Building Name: INTERNATIONAL VILLAGE

Heating: Other

Amenities & Features

Features: Custom Mirrors, Interior Hall, Split Bedroom

Amenities: Dishwasher, Electric Range, Electric Water Heater, Refrigerator

ExteriorFeatures: Screened Balcony

GarageYN: No

CoolingYN: Yes

FireplaceYN: No

Security Features: Complex Fenced, Guard At Site

WindowFeatures: Blinds, Drapes

Waterfront available: Yes

AttachedGarageYN: No

PoolPrivateYN: No

