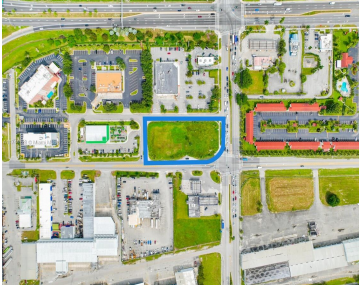
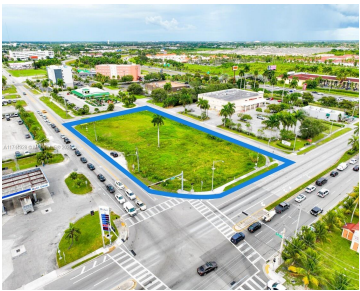


41 KROME AVE, FLORIDA CITY, FL, 33034

<https://igorpresman.com>

41 Krome Ave,
Florida City, FL,
33034



Land Lease: Exceptional corner parcel on very busy intersection. Corner of Krome Ave - SW 177 Ave and W Palm Dr - SW 344 St. Ideal for Retail, Restaurant, Bank, Medical Center, Urgent Care and Fitness Center. 1.24-acre site zoned General Commercial C-1 and C-2. Offering a Ground Lease at \$3.8 per square foot, \$205,823 [...]

- Commercial Land
- Active



Building Details

NewConstructionYN: No

Amenities & Features



Waterfront available: No

AttachedGarageYN: No

PoolPrivateYN: No

GarageYN: No

CoolingYN: No

FireplaceYN: No

