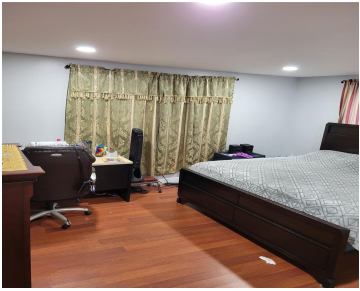


4821 22ND CT, LAUDERHILL, FL, 33313
https://igorpresman.com

4821 22nd Ct,
Lauderhill, FL,
33313



Beautifully Updated 2/2 Corner Unit with Additional Den/Office/Bedroom space in Quiet 55+ Community. Spacious and bright corner unit featuring laminate wood and tile flooring throughout. Substantially remodeled with stainless steel appliances, white shaker cabinets, a center island, marble counter tops, soft-close drawers, and plenty of pantry space. Additional upgrades include bathrooms, a Nest thermostat, modern [...]

- 2 beds
- 2 baths
- Residential
- Condominium
- Active
- 1057 sq ft



Building Details

Cooling features: Central Air

NewConstructionYN: No

Exterior material: CBS Construction

Parking: 2 Or More Spaces

ArchitecturalStyle: Corner Unit

Building Name: Castle Gardens

Heating: Central





Amenities & Features

Features: Den/Library/Office, First Floor Entry

Amenities: Dishwasher, Disposal, Electric Range, Microwave, Refrigerator

GarageYN: No

CoolingYN: Yes

FireplaceYN: No

Security Features: Fire Alarm, Smoke Detector, Intercom In Lobby, Lobby Secured

Waterfront available: No

AttachedGarageYN: No

PoolPrivateYN: No

