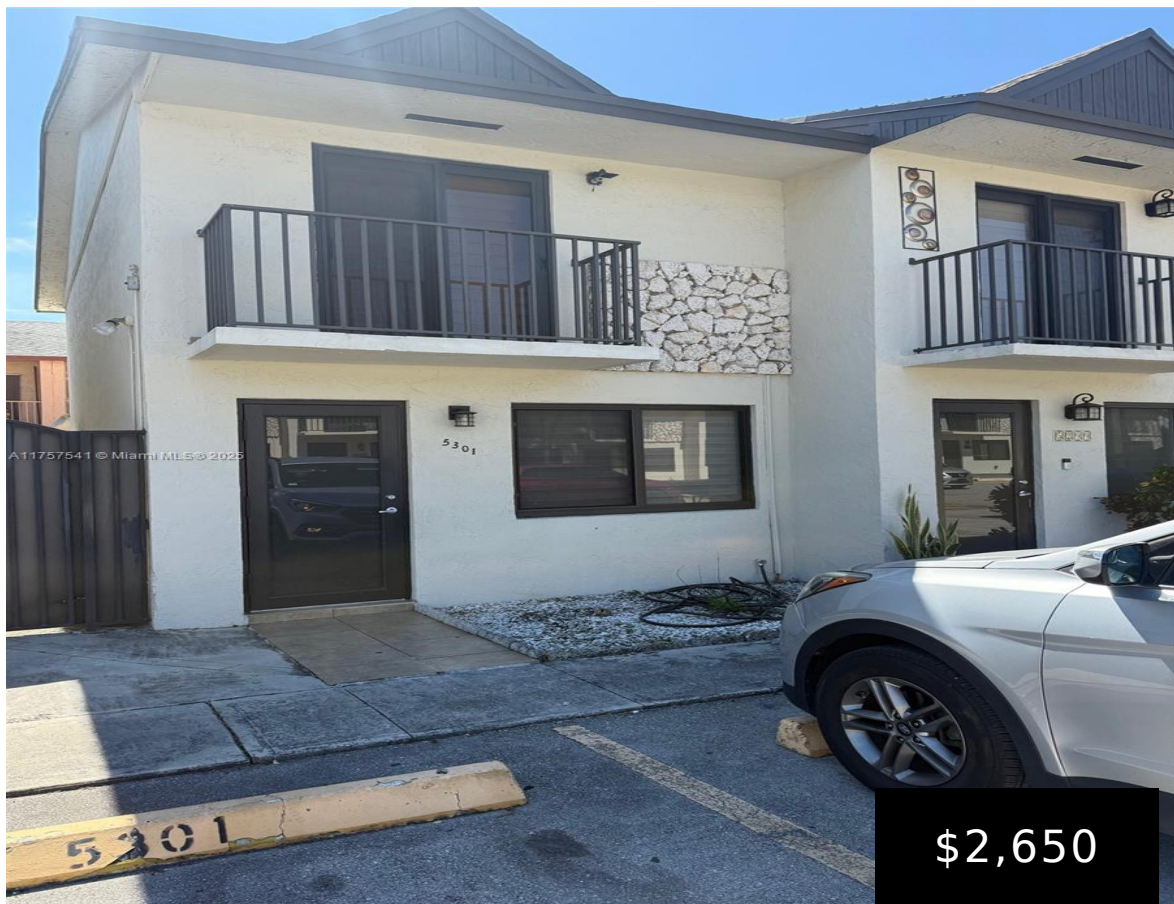


5301 22ND CT, HIALEAH, FL, 33016
https://igorpresman.com

5301 22nd Ct,
Hialeah, FL, 33016



Lovely 2 bedroom 1 1/2 bath townhouse in the heart of Hialeah, near the Westland Mall, Schools, Daycare, Shopping's, Publix, Restaurants, providing easy access to your shopping needs. A half bath on the first floor, spacious fenced in patio, and balcony in bedrooms upstairs, and washer and dryer in Unit. Easy to show.

- 2 beds
- 1 bath
- Residential Lease
- Condominium
- Active
- 888 sq ft



Building Details

Cooling features: Central Air, Electric
Building Name: WESTLAND VILLAGE CONDO
Parking: 1 Space

NewConstructionYN: No
Heating: Central, Electric





Amenities & Features

Waterfront available: No

AttachedGarageYN: No

PoolPrivateYN: No

GarageYN: Yes

CoolingYN: Yes

FireplaceYN: No

