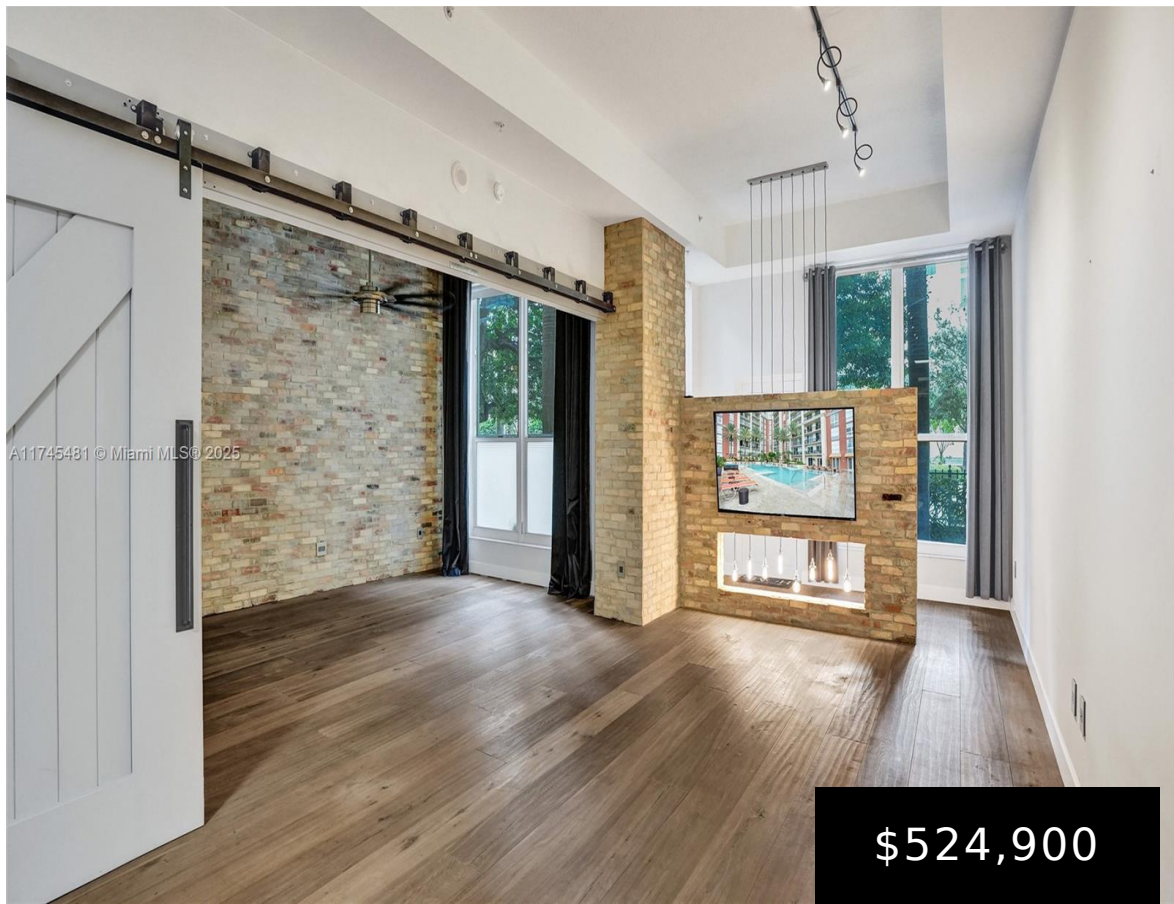


550 OKEECHOBEE BLVD, WEST PALM BEACH, FL,
33401

<https://igorpresman.com>

550 Okeechobee
Blvd, West Palm
Beach, FL, 33401



One-of-a-kind 1st floor unit with 12' ceilings in one of downtown WPB's premier buildings. Open floorplan with incredible upgrades including reclaimed brick walls, wide-plank wood flooring, 13' wide custom barn doors (creating a separate sleeping area when closed), concrete counter tops and private direct exterior entry which is perfect for pets. Assigned, covered parking on [...]

- 1 bed
- 1 bath
- Residential
- Condominium
- Active
- 851 sq ft



Building Details

Cooling features: Ceiling Fan(s), Central Air, Electric
Building Name: CITYPLACE SOUTH TOWER
Parking: 1 Space, Assigned, Covered

NewConstructionYN: No
Heating: Central, Electric





Amenities & Features

Features: First Floor Entry, Lobby, Volume Ceilings, Walk-In Closet(s)

Amenities: Dishwasher, Disposal, Dryer, Electric Range, Ice Maker, Microwave, Refrigerator, Washer

ExteriorFeatures: Other

GarageYN: Yes

CoolingYN: Yes

FireplaceYN: No

Security Features: Doorman, Secured Garage/Parking, Other

WindowFeatures: Clear Impact Glass, Blinds, Impact Glass

Waterfront available: No

AttachedGarageYN: No

PoolPrivateYN: No

