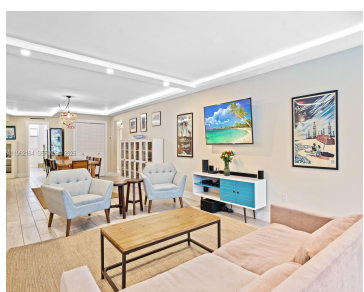
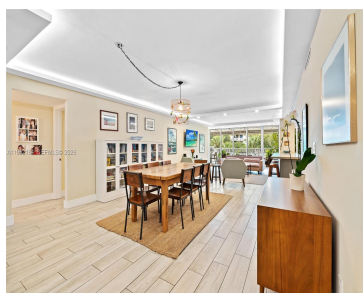
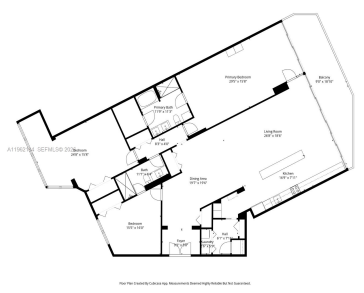


600 GRAPETREE DR, KEY BISCAWAYNE, FL, 33149

<https://igorpresman.com>

600 Grapetree Dr,
Key Biscayne, FL,
33149



Best Priced 3 Bedroom/2 bath Beachfront Condo on Key Biscayne! This unit was completely renovated in 2020 creating a beautifully enlarged, modern open floor plan. The rooms are oversized, each with a lovely view of the ocean, patio or courtyard. The space is light, bright and airy with floor to ceiling impact sliding doors spanning [...]

- 3 beds
- 2 baths
- Residential
- Condominium
- Active
- 1889 sq ft



Building Details



Cooling features: Central Air, Electric

NewConstructionYN: No

Heating: Central, Electric

Parking: 1 Space, Guest, Parking-Under Building

ArchitecturalStyle: High Rise

Building Name: Mar Azul

Exterior material: Concrete Block Construction, Pre-Cast Concrete Construction

Amenities & Features

Features: Atrium, Entrance Foyer, Great Room, Pantry

Amenities: Dishwasher, Dryer, Electric Range, Electric Water Heater, Microwave, Refrigerator, Self Cleaning Oven, Washer

ExteriorFeatures: Courtyard

GarageYN: Yes

CoolingYN: Yes

FireplaceYN: No

Security Features: Fire Alarm, Smoke Detector, Complex Fenced, Guard At Site, Lobby Secured

WindowFeatures: Clear Impact Glass, Blinds, Drapes, High Impact Windows

Waterfront available: Yes

AttachedGarageYN: Yes

PoolPrivateYN: No

