

6060 120TH ST, PINECREST, FL, 33156

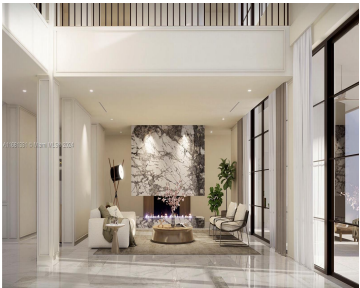
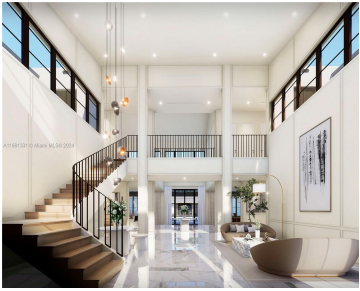
<https://igorpresman.com>

6060 120th St,  
Pinecrest, FL,  
33156



\$14,900,000

We are pleased to feature one of the finest custom built home in Pinecrest. World-renowned architect, Reinaldo Borges of Borges Architects, along with Alice Dahbura-Borges who orchestrated the Interior Design of the house, have created this stunning innovative estate with the highest quality to finishes and details. Nestled on over an acre and lusciously landscaped [...]



- 7 beds
- 10 baths
- Residential
- Single Family Residence
- Active



## Rooms



Room type	Dimensions	Area	Length	Width
FourthBedroom	15x13	195	15	13
ThirdBedroom	19x13	247	19	13
PrimaryBedroom	19x18	342	19	18
FifthBedroom	19x13	247	19	13
SecondBedroom	19x14	266	19	14
Other Room	Seventh Bedroom 10.5x9			9
Other Room	Sixth Bedroom 19.5x15			
PatioBalcony	47x19	893	47	19
DiningRoom	20x17.5	350	20	17.5
LivingRoom	Second floor 18x17.5			17.5
LivingRoom	Formal 20x17.5			17.5
Den	18x13	234	18	13
FamilyRoom	19x18.5	351.5	19	18.5
Porch	Covered Terrace 48x22			22
Porch	Covered Terrace 52x13			13
Other Room	Guest House 36.5x16.5			16.5



---

# Building Details

<b>Cooling features:</b> Central Air	<b>ArchitecturalStyle:</b> Detached, Two Story
<b>NewConstructionYN:</b> No	<b>Building Name:</b> UNPLATTED
<b>Exterior material:</b> Concrete Block Construction	<b>Roof:</b> Metal Roof
<b>Heating:</b> Central	<b>Parking:</b> Driveway, Electric Vehicle Charging Station(s)

---

# Amenities & Features

<b>Features:</b> Cooking Island, Den/Library/Office, Family Room, Fireplace, Maid/In-Law Quarters, Media Room, Pantry, Utility Room/Laundry, Vaulted Ceiling(s), Volume Ceilings, Walk-In Closet(s)	<b>Amenities:</b> Dishwasher, Dryer, Gas Range, Microwave, Other Equipment/Appliances, Refrigerator, Trash compactor, Washer
<b>CommunityFeatures:</b> None	<b>WindowFeatures:</b> Complete Impact Glass, High Impact Windows, Impact Glass
<b>ExteriorFeatures:</b> Built-In Grill, Lighting, Open Balcony, Tennis Court(s)	<b>PoolFeatures:</b> In Ground
<b>Waterfront available:</b> No	<b>GarageYN:</b> Yes
<b>AttachedGarageYN:</b> Yes	<b>CoolingYN:</b> Yes
<b>PoolPrivateYN:</b> No	<b>FireplaceYN:</b> Yes

