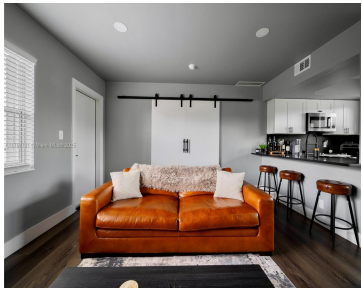


609 13TH AVE, FORT LAUDERDALE, FL, 33304

<https://igorpresman.com>

609 13th Ave, Fort
Lauderdale, FL,
33304



Welcome to Park Place Condo, a charming garden-style community with just 19 exclusive units located in prestigious Victoria Park in Fort Lauderdale, minutes from the vibrant energy of Las Olas Blvd, downtown Fort Lauderdale, stunning beaches, Flagler and FAT Village Arts District, next to Holiday Park, and Publix. This fully renovated 1/1 condo offers an [...]

- 1 bed
- 1 bath
- Residential
- Condominium
- Active
- 580 sq ft



Building Details

Cooling features: Central Air

Building Name: PARK PLACE CONDO

Heating: Central

NewConstructionYN: No

Exterior material: CBS Construction

Parking: 1 Space, Assigned





Amenities & Features

Features: Cooking Island, Other, Walk-In Closet(s)

Amenities: Dishwasher, Electric Range, Microwave, Refrigerator

Waterfront available: No

AttachedGarageYN: No

PoolPrivateYN: No

Security Features: Elevator Secure, Stairs Secured

ExteriorFeatures: East Of Us1, Exterior Cat Walk, Other

GarageYN: Yes

CoolingYN: Yes

FireplaceYN: No

