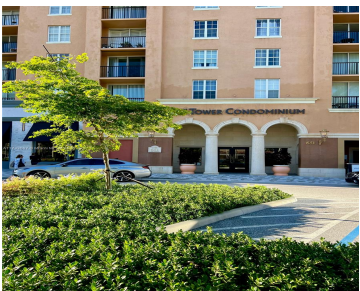
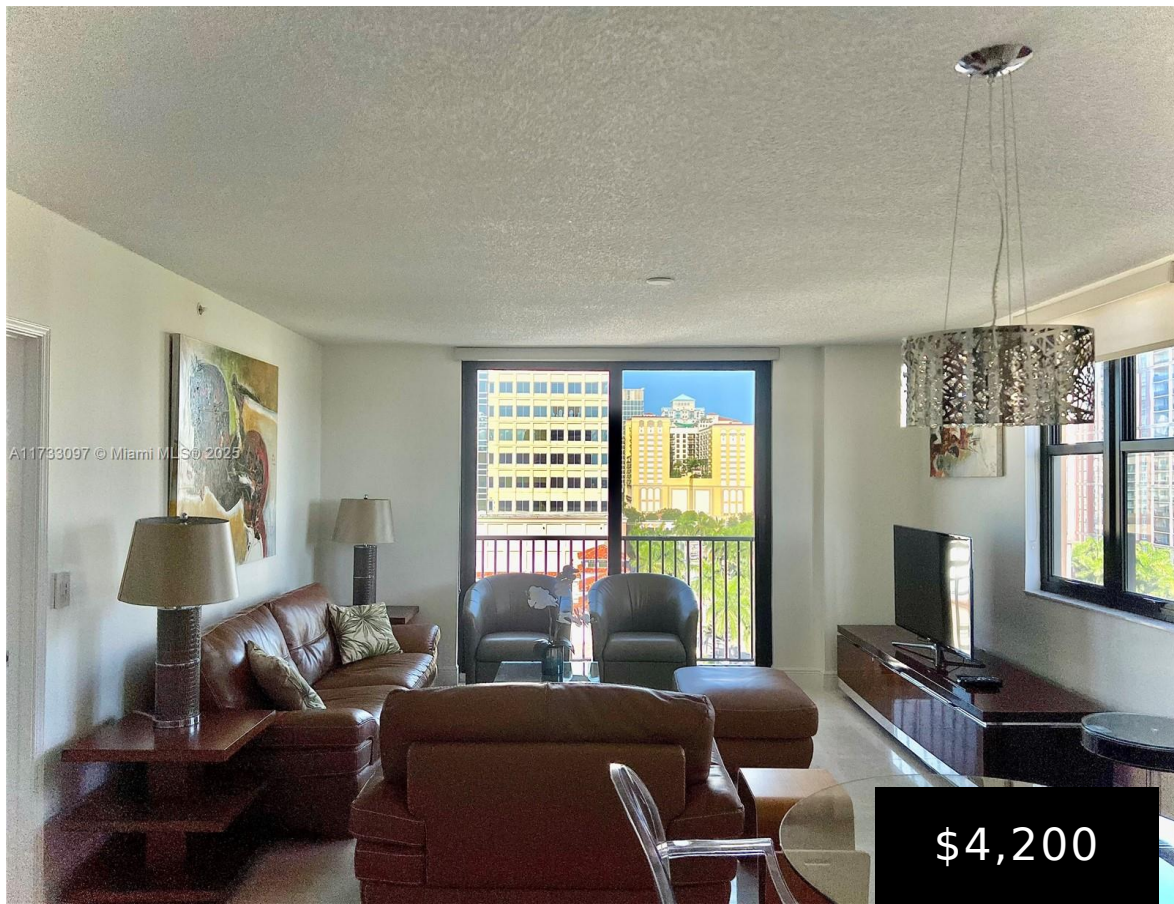


651 OKEECHOBEE BLVD, WEST PALM BEACH, FL,
33401

<https://igorpresman.com>

651 Okeechobee
Blvd, West Palm
Beach, FL, 33401



Move in ready! In the heart of Rosemary Square, downtown West Palm Beach, Cityplace an unbeatable location! Fully furnished, turnkey, bright and cozy 2 BED, 2 BATH, SE corner unit with lots of light and city views! A serene and quiet space. Features an open kitchen, granite countertops, wine cooler and stainless steel appliances. High [...]

- 2 beds
- 2 baths
- Residential Lease
- Condominium
- Active
- 1075 sq ft



Building Details

Cooling features: Central Air
Building Name: TOWER CONDO AT CITYPLACE

NewConstructionYN: No
Parking: Covered, Parking Garage, Valet





Amenities & Features

Features: Walk-In Closet(s)

CommunityFeatures: Additional Amenities, Gated, Clubhouse, Exercise Room, Gated Community, Maintained Community, Management On Site

ExteriorFeatures: Open Balcony

Waterfront available: No

AttachedGarageYN: No

PoolPrivateYN: No

Security Features: Key Card Entry, Building Security, Gated with Guard, Lobby Attended

WindowFeatures: Clear Impact Glass, Complete Impact Glass, Blinds, High Impact Windows, Impact Glass

PoolFeatures: Hot Tub

GarageYN: Yes

CoolingYN: Yes

FireplaceYN: No

