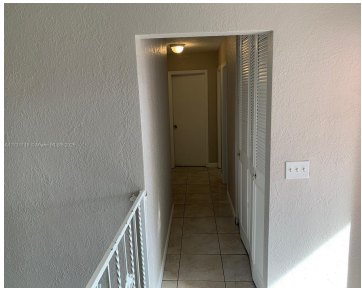
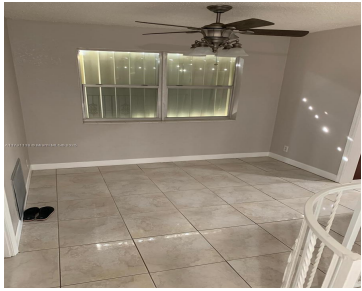


6535 8TH PL, NORTH LAUDERDALE, FL, 33068

<https://igorpresman.com>

6535 8th Pl, North
Lauderdale, FL,
33068



Check out this spacious 4-bedroom, 2-bathroom single-family home with a 1-car garage, an abundance of tropical fruit trees and lawn care is included in the rent. No HOA approval required! Perfect for a growing family, this home features an updated kitchen with wood cabinets, stainless steel appliances, and granite countertops. It also offers a formal [...]

- 4 beds
- 2 baths
- Residential Lease
- Single Family Residence
- Active
- 2165 sq ft



Building Details



Cooling features: Ceiling Fan(s), Central Air, Electric

NewConstructionYN: No

Exterior material: CBS Construction

Heating: Central, Electric

ArchitecturalStyle: Ranch

Building Name: KIMBERLY VILLAGE SEC TWO

Roof: Shingle

Parking: 2 Spaces

Amenities & Features

Features: First Floor Entry, Florida Room, Pantry, Split Bedroom

Amenities: Dishwasher, Disposal, Dryer, Electric Range, Electric Water Heater, Microwave, Refrigerator, Washer

Waterfront available: No

AttachedGarageYN: Yes

PoolPrivateYN: No

Security Features: Smoke Detector, No Burglar Alarm

WindowFeatures: Complete Accordion Shutters

GarageYN: Yes

CoolingYN: Yes

FireplaceYN: No

