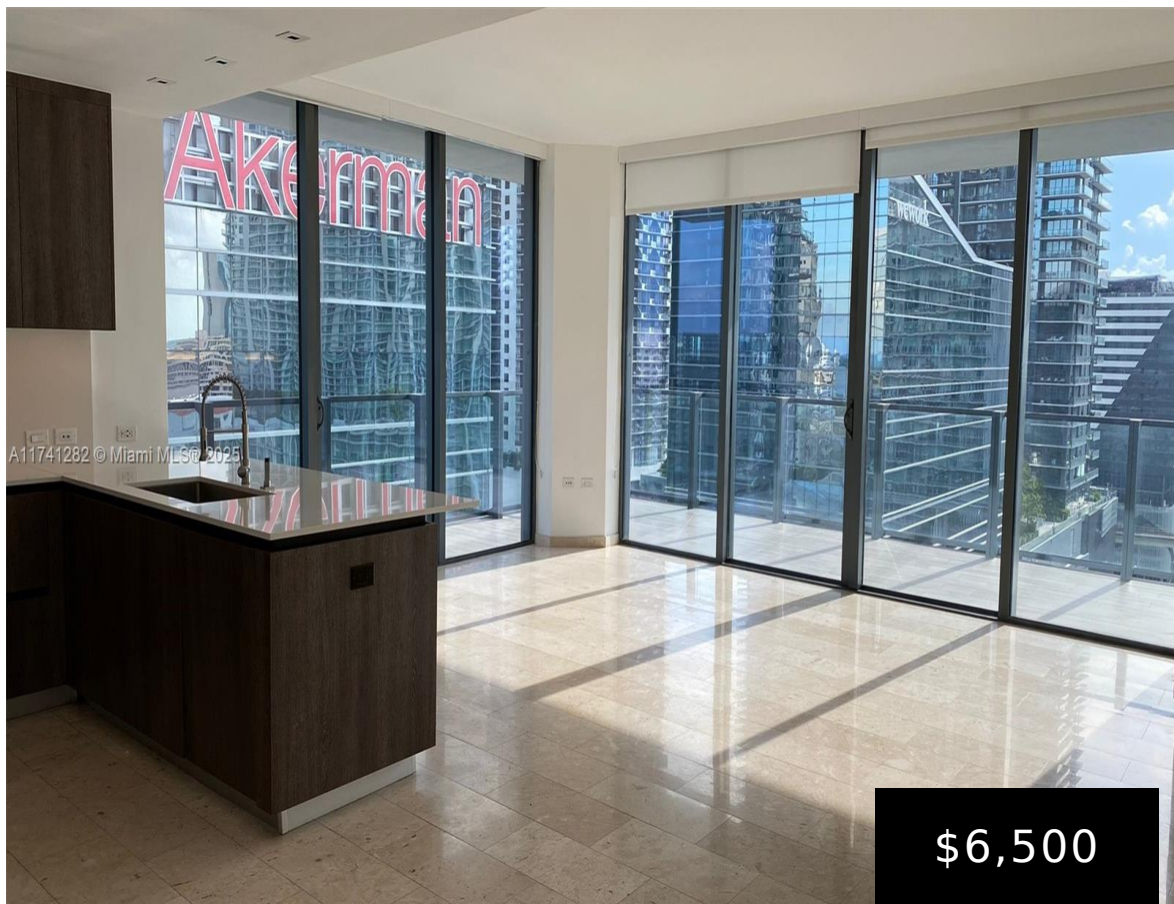


68 6TH ST, MIAMI, FL, 33131
https://igorpresman.com

68 6th St, Miami,
FL, 33131



Large Corner 2 Bed 2.5 bath at Brickell City Center REACH, with City, River and SW views. Live in the heart of Brickell Financial District at a newly finished building. upgraded unit with remote controlled shades and blackout in all rooms. High quality living environment, with concierge services, valet parking, Gym, Spa, Pool and all [...]

- 2 beds
- 2 baths
- Residential Lease
- Condominium
- Active
- 1265 sq ft



Building Details

ArchitecturalStyle: Other
Building Name: REACH CONDO
Roof: Bahama
Parking: 1 Space, Limited # Of Vehicle, No Trucks/Trailers

NewConstructionYN: No
Exterior material: CBS Construction
Heating: Central





Amenities & Features

Features: Cooking Island, First Floor Entry, Second Floor Entry, Split Bedroom, Walk-In Closet(s)

Amenities: Dishwasher, Disposal, Dryer, Electric Range, Ice Maker, Microwave, Refrigerator, Trash compactor, Washer

WindowFeatures: Complete Impact Glass, Blinds

PoolFeatures: Community, Other

GarageYN: Yes

CoolingYN: No

FireplaceYN: No

Security Features: Smoke Detector, Key Card Entry, Complex Fenced

CommunityFeatures: Clubhouse, Pool, Exercise Room, Sauna

ExteriorFeatures: Open Balcony

Waterfront available: Yes

AttachedGarageYN: No

PoolPrivateYN: No

