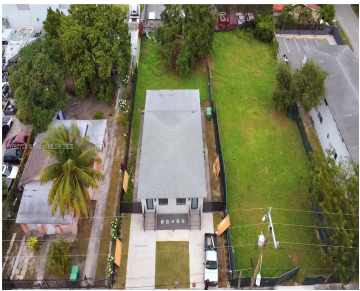


683 & 681 & 679 30TH ST, MIAMI, FL, 33127

<https://igorpresman.com>

683 & 681 & 679
30th St, Miami, FL,
33127



Rare 3-Lot Assemblage – 21,600 SQFT Total – Prime Commercial Opportunity in Miami’s D1 Zoning Exceptional development opportunity featuring a three-parcel assemblage totaling 21,600 SQFT in Miami’s sought-after D1 (Workplace) zoning district. Currently offered: 681 & 679 NW 30th St – Totaling 21,600 SQFT Zoning allows for light industrial, office, warehouse, and creative commercial uses. [...]

- Commercial Land
- Active



Building Details

NewConstructionYN: No

Amenities & Features



Waterfront available: No

AttachedGarageYN: No

PoolPrivateYN: No

GarageYN: No

CoolingYN: No

FireplaceYN: No

