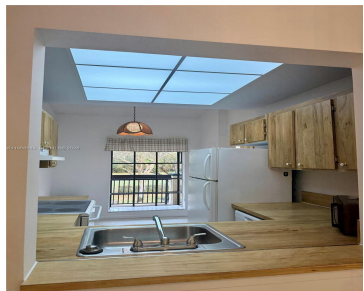


\$2,200



Beautiful and Bright layout with comfortable living spaces. Conveniently located near major highways, shopping centers, dining and just a short drive to the beach. Community offers well-kept grounds and amenities for residents to enjoy.

- 2 beds
- 2 baths
- Residential Lease
- Condominium
- Active
- 1150 sq ft



Building Details

Cooling features: Central Air

NewConstructionYN: No

Exterior material: CBS Construction

ArchitecturalStyle: Second Floor Entry

Building Name: MEADOWRIDGE EAST CONDO

Parking: 1 Space, Guest



Amenities & Features

Features: Second Floor Entry

CommunityFeatures: Clubhouse, Pool, Exercise Room

Waterfront available: No

AttachedGarageYN: No

PoolPrivateYN: No

Amenities: Dishwasher, Dryer, Electric Range, Microwave, Refrigerator, Washer

PoolFeatures: Community

GarageYN: Yes

CoolingYN: Yes

FireplaceYN: No

