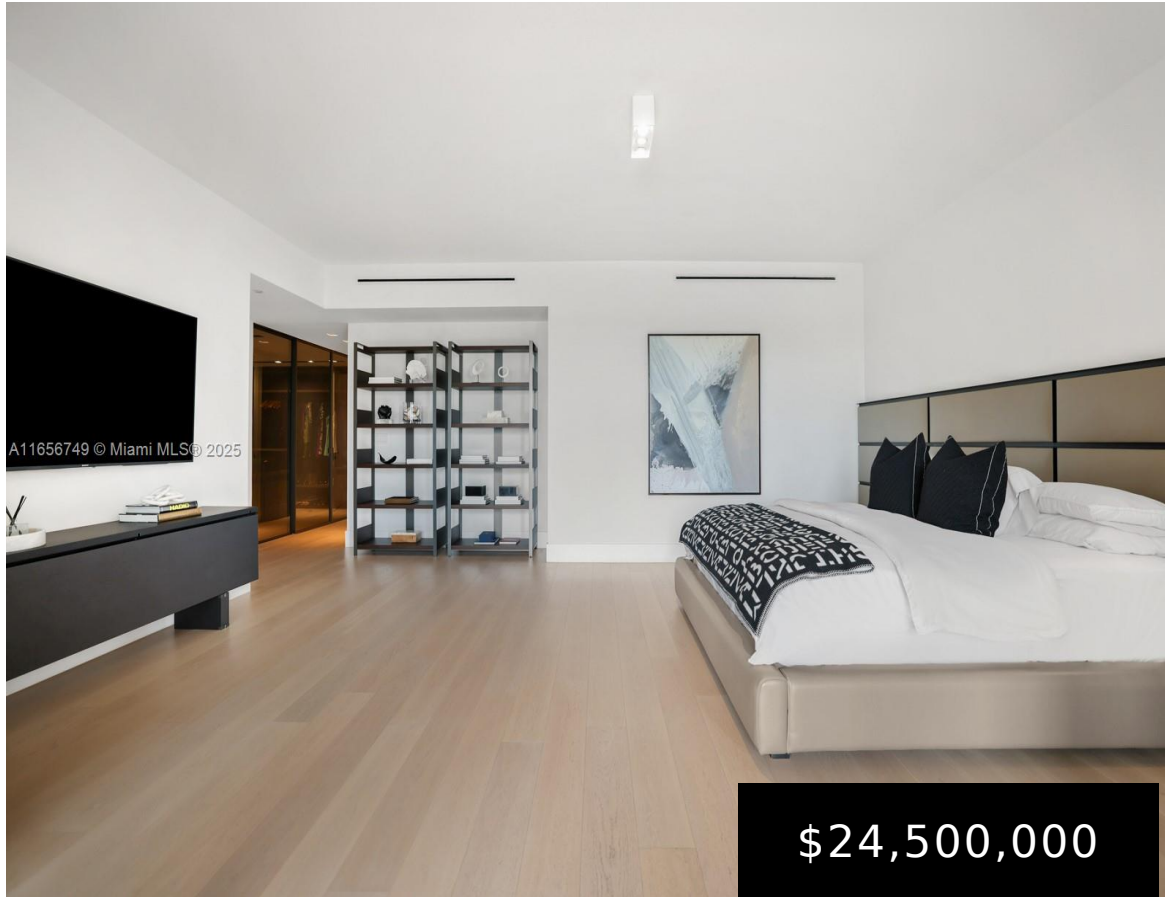


7025 FISHER ISLAND DR, MIAMI BEACH, FL, 33109

<https://igorpresman.com>

7025 Fisher Island
Dr, Miami Beach,
FL, 33109



Step Inside With Me! Space reigns supreme at this exceptional Bay Estate at Palazzo del Sol. With 5 bedrooms + study, the 7,600SF of meticulously maintained interiors are complimented by serene water views and nearly 3,000SF of terraces. Stately elevators lead to an impeccably appointed great room featuring 5 social areas: grand foyer, hosting salon, [...]

- 5 beds
- 6 baths
- Residential
- Condominium
- Active
- 7630 sq ft



Building Details

Cooling features: Central Air, Electric

NewConstructionYN: No

Heating: Central, Electric

Parking: 2 Or More Spaces, Golf Cart Parking, Valet

ArchitecturalStyle: Corner Unit

Building Name: Palazzo Del Sol

Exterior material: CBS Construction



Amenities & Features

Features: Built-in Features, Den/Library/Office, Elevator, Great Room, Media Room, Storage, Utility Room/Laundry

Amenities: Dishwasher, Dryer, Electric Water Heater, Refrigerator, Wall Oven, Washer

ExteriorFeatures: Open Balcony

GarageYN: Yes

CoolingYN: Yes

FireplaceYN: No

Security Features: Doorman, Elevator Secure

WindowFeatures: Impact Glass

Waterfront available: Yes

AttachedGarageYN: No

PoolPrivateYN: No

