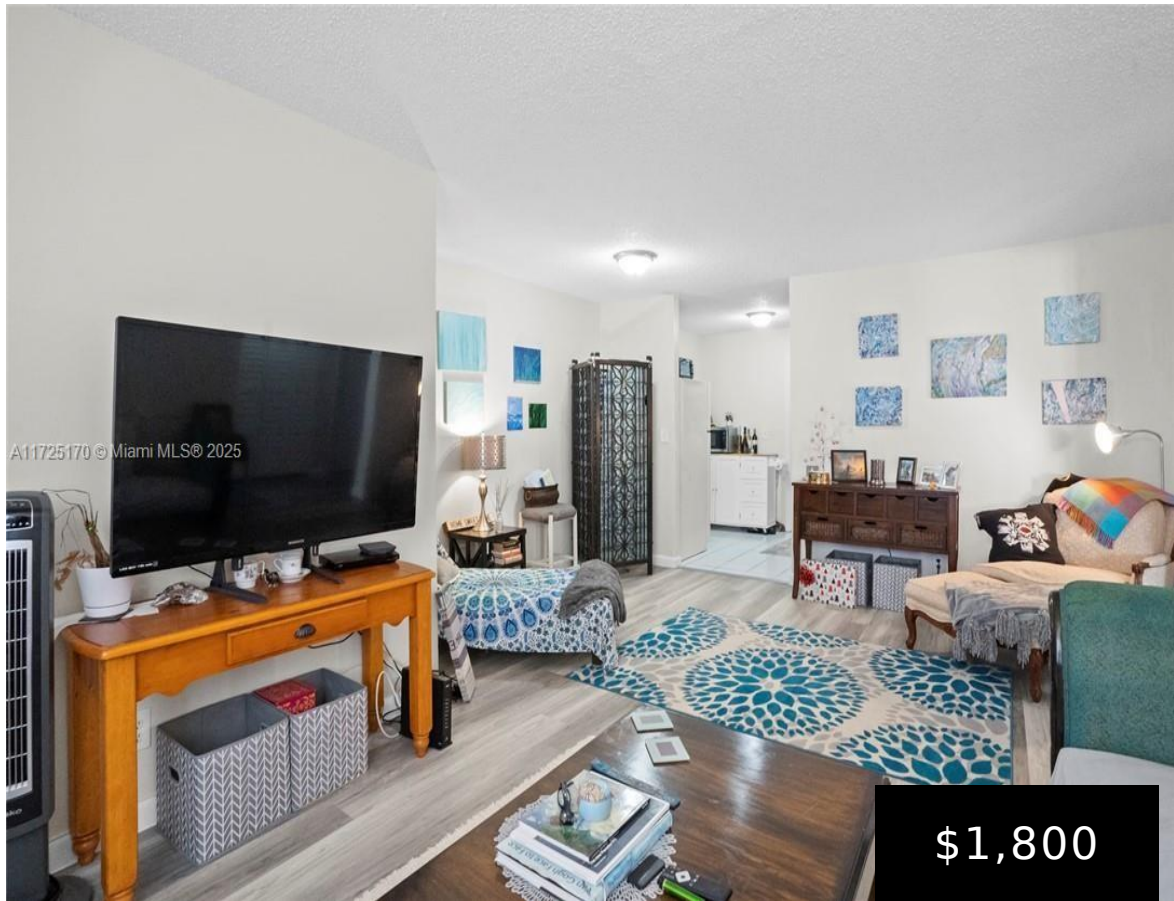
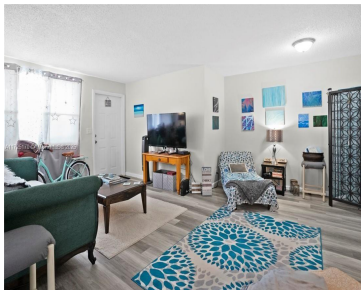


850 COMMERCIAL BLVD, OAKLAND PARK, FL, 33334  
https://igorpresman.com

850 Commercial  
Blvd, Oakland Park,  
FL, 33334



\$1,800



AVAILABLE JANUARY 20th. Bright 2/1 condo located at the Courtyards of Cimarron, centrally located and just a short drive to the beach, restaurants & shops. This 2nd level unit features an open floor plan with new contemporary vinyl plank flooring throughout the space along with LED bright lighting. Large open air balcony which offers courtyard [...]

- 2 beds
- 1 bath
- Residential Lease
- Condominium
- Active
- 830 sq ft



## Building Details



Cooling features: Central Air

NewConstructionYN: No

Exterior material: CBS Construction

ArchitecturalStyle: First Floor Entry, Garden Apartment

Building Name: COURTYARDS AT CIMARRON

Parking: 1 Space, Assigned, Limited # Of Vehicle, No Rv/Boats, No Trucks/Trailers

## Amenities & Features

Features: First Floor Entry

CommunityFeatures: Recreation Facilities, Pool, Laundry Facilities

PoolFeatures: In Ground, Community

GarageYN: No

CoolingYN: Yes

FireplaceYN: No

Amenities: Electric Range, Electric Water Heater, Refrigerator

ExteriorFeatures: Open Balcony

Waterfront available: No

AttachedGarageYN: No

PoolPrivateYN: No

