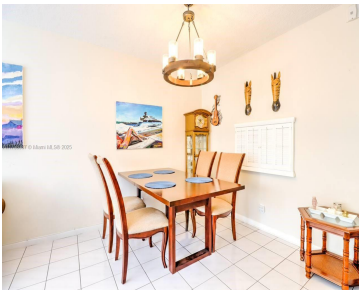


850 12TH AVE, HALLANDALE BEACH, FL, 33009

<https://igorpresman.com>

850 12th Ave,
Hallandale Beach,
FL, 33009



\$195,000

Spacious (1071 sq. ft.) and well-lit unit offering a charming garden view. The unit features large rooms filled with natural light, ample closet space, and additional storage in the laundry room. Includes one assigned parking space and free guest parking. This is an excellent opportunity to reside in the heart of Hallandale, just a mile [...]

- 1 bed
- 1 bath
- Residential
- Condominium
- Active
- 1071 sq ft



Building Details

Cooling features: Central Air
NewConstructionYN: No
Exterior material: CBS Construction
Parking: 1 Space, Assigned, Guest

ArchitecturalStyle: Patio/Cluster
Building Name: Irvington Garden Condo
Heating: Central, Electric





Amenities & Features

Features: First Floor Entry, Utility Room/Laundry, Walk-In Closet(s)

Amenities: Dishwasher, Disposal, Microwave, Refrigerator, Trash compactor, Wall Oven, Washer

Waterfront available: No

AttachedGarageYN: No

PoolPrivateYN: No

Security Features: Fire Alarm, Smoke Detector, No Security

ExteriorFeatures: East Of Us1, Barbeque, Courtyard

GarageYN: No

CoolingYN: Yes

FireplaceYN: No

