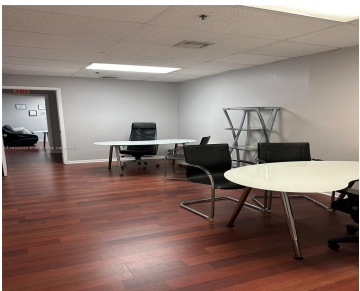
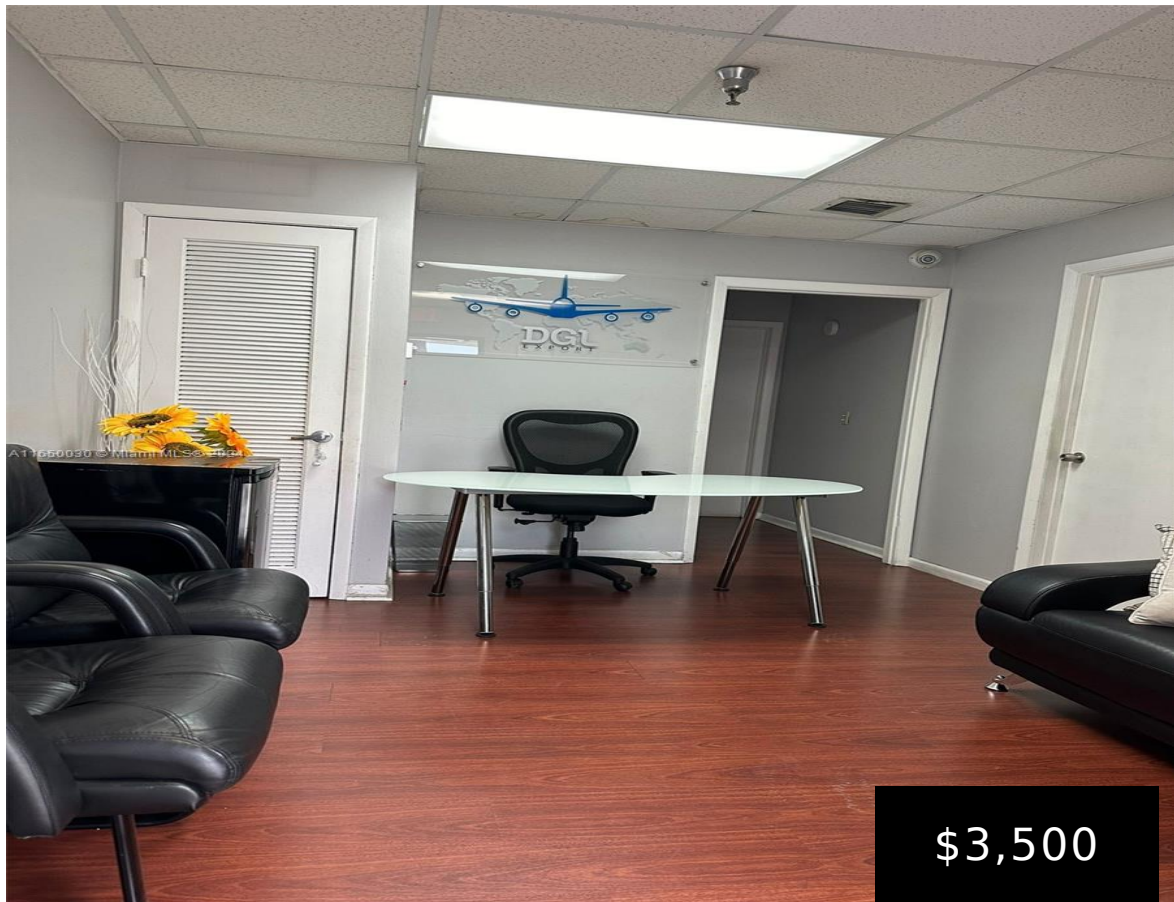


8505 68TH ST, MEDLEY, FL, 33166

<https://igorpresman.com>

8505 68th St,
Medley, FL, 33166



Sublease Warehouse 1,600 sq ft and offices 400 sqft with two parking spaces. If you are starting a shipping business, this sublease is the ideal solution. With a spacious warehouse, loading equipment such as a forklift and scale, you will be able to manage your shipments efficiently. The furnished offices will allow you to serve [...]

- Commercial Sale
- Industrial
- Active



Building Details

ParkingTotal: 2

NewConstructionYN: No

Amenities & Features



Waterfront available: No

AttachedGarageYN: No

PoolPrivateYN: No

GarageYN: No

CoolingYN: No

FireplaceYN: No

