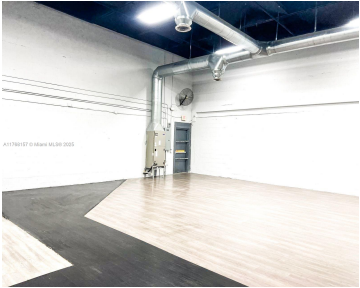
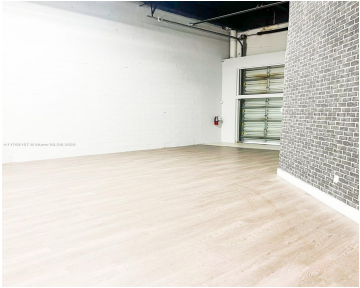


9450 58TH ST, DORAL, FL, 33178

<https://igorpresman.com>

9450 58th St,  
Doral, FL, 33178



Prime office-warehouse space in the heart of Doral, offering a total of 2,753 sq. ft., including 469 sq. ft. of elegantly designed office space with marble flooring. The warehouse is fully air-conditioned for optimal comfort and features a convenient street-level loading door. With 1 assigned parking and a full row of visitor parking, you'll have [...]

- Commercial Sale
- Mixed Use
- Active



## Building Details

NewConstructionYN: No

## Amenities & Features



**Waterfront available:** No

**AttachedGarageYN:** No

**PoolPrivateYN:** No

**GarageYN:** No

**CoolingYN:** No

**FireplaceYN:** No

