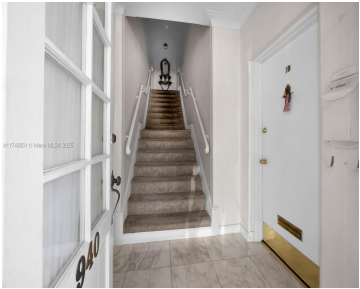
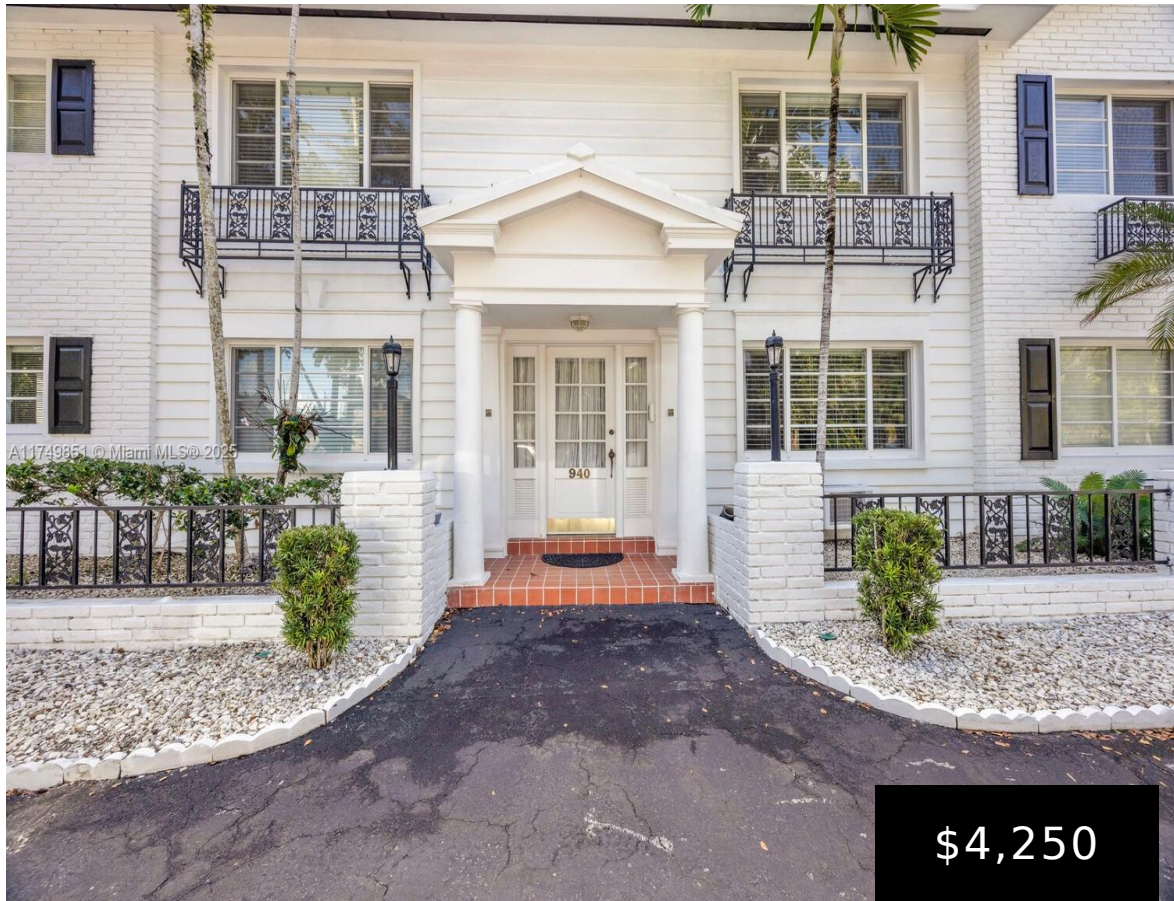


950 SEVILLA AVE, CORAL GABLES, FL, 33134

https://igorpresman.com

950 Sevilla Ave,
Coral Gables, FL,
33134



Recently updated unit. Best value and unit size in Coral Gables. Move-in Ready. Washer/Dryer in unit. Conveniently located, steps away from the Venetian Pool, the Biltmore Hotel and a short drive from fine dining and entertainment to Downtown Coral Gables / Miracle Mile. Great Opportunity!!!

- 2 beds
- 2 baths
- Residential Lease
- Condominium
- Active
- 1134 sq ft



Building Details

NewConstructionYN: No

Building Name:
FOUNTAINVIEW MANOR CONDO

Parking: Additional Spaces Available, Assigned, Guest, No Rv/Boats, No Trucks/Trailers, Unassigned





Amenities & Features

Features: Built-in Features, First Floor Entry, Other, Pantry

Amenities: Dishwasher, Dryer, Microwave, Other Equipment/Appliances, Refrigerator, Washer

Waterfront available: No

GarageYN: Yes

AttachedGarageYN: No

CoolingYN: No

PoolPrivateYN: No

FireplaceYN: No

